

User Manual

SiH-5&6kW-SH (All-in-One)

Issue 1

Date 2025-01-01



All Rights Reserved

- **All Rights Reserved**

No part of this document can be reproduced in any form or by any means without the prior written permission of Shanghai Sieyuan Electric Co., Ltd.(hereinafter " Sieyuan").

- **Trademarks**

SIEYUAN and other Sieyuan trademarks used in this manual are owned by Sieyuan.

All other trademarks or registered trademarks mentioned in this manual are owned by their respective owners.

- **Software Licenses**

- It is prohibited to use data contained in firmware or software developed by Sieyuan, in part or in full, for commercial purposes by any means.
- It is prohibited to perform reverse engineering, cracking, or any other operations that compromise the original program design of the software developed by Sieyuan.

Sieyuan Electric Co., Ltd.

Address: No. 3399 Huaning Rd.

Minhang District,

Shanghai 201100

P. R. China

Website: <https://www.sieyuan.com>

About This Manual

The manual primarily encompasses product information, along with installation, operation, and maintenance guidelines.

It will refer to the device as the "inverter" unless otherwise specified.

- **Target Audience**

This manual is intended for professional technicians who have responsibilities for the installation, operation, and maintenance of inverters, as well as users who need to check inverter parameters.

Installation Requirements:

The installation of the inverter should only be carried out by professional technicians who meet the following requirements

- Possess knowledge of electronics, electrical wiring, and mechanical expertise, and be familiar with electrical and mechanical schematics.
- Have received professional training related to the installation and commissioning of electrical equipment.
- Capable of promptly responding to hazards or emergencies that may arise during the installation and commissioning process.
- Familiar with local standards and relevant safety regulations pertaining to electrical systems.
- Thoroughly read this manual and understand the safety instructions associated with the operations.

- **How to Use This Manual**

- Please carefully read this manual before utilizing the product and store it in a readily accessible location.
- All content, images, trademarks, and symbols in this manual are the property of Sieyuan. No part of this document may be reproduced by individuals not employed by Sieyuan without written authorization.
- The contents of this manual may be periodically updated or revised, and the specifications of the actual product purchased should take precedence.

- **Symbols**

This manual incorporates crucial safety instructions that are emphasized using specific symbols. These symbols are employed to ensure the safety of individuals and property during product usage or to assist in maximizing product performance efficiently..

It is essential to thoroughly comprehend the significance of the warning symbols to enhance your utilization of the manual.

DANGER

Indicates the presence of high-risk potential hazards that, if not avoided, could result in severe injury or even death.

WARNING

Indicates the presence of moderate-risk potential hazards that, if not avoided, could result in serious injury or even death.

CAUTION

Indicates the presence of low-risk potential hazards that, if not avoided, may lead to minor or moderate injury.

NOTICE

Indicates potential risks that, if not avoided, may result in device malfunctions or financial losses.

The "NOTE" designation is used to indicate supplementary information, emphasized content, or helpful tips that can assist you, such as problem-solving techniques or time-saving suggestions.

Change History

Changes between document issues are cumulative, meaning that each subsequent document issue includes all the changes made in earlier issues.

Issue 1 (2025-01-01)

This issue is the first official release.

Contents

| | |
|---|----|
| 1 Safety Instructions | 1 |
| 1.1 Unpacking and Inspection | 1 |
| 1.2 Installation Safety | 2 |
| 1.3 Electrical Connection Safety | 2 |
| 1.4 Operation Safety | 3 |
| 1.5 Maintenance Safety | 3 |
| 1.6 Disposal Safety | 4 |
| 1.7 Battery Safety | 4 |
| 1.8 Emergency Measures | 6 |
| 1.8.1 Battery Electrolyte Leakage | 6 |
| 1.8.2 Fire | 6 |
| 1.9 EU Declaration of Conformity | 7 |
| 2 Product Description | 8 |
| 2.1 System Introduction | 8 |
| 2.2 Product Introduction | 8 |
| 2.3 Symbols on the Product | 10 |
| 2.4 Indicator Status | 11 |
| 2.4.1 Inverter Indicator Status | 11 |
| 2.4.2 Battery Indicator Status | 12 |
| 2.5 DC Switch | 12 |
| 2.6 PV Energy Storage System (PV ESS) | 12 |
| 2.6.1 PV Energy Storage System (PV ESS) | 12 |
| 2.6.2 Declaration For EPS Function | 13 |
| 2.6.3 Energy Management | 14 |
| 3 Function Description | 17 |
| 3.1 Safety Function | 17 |
| 3.1.1 Protection | 17 |
| 3.1.2 Earth Fault Alarm | 17 |
| 3.2 Energy Conversion and Management | 17 |
| 3.2.1 Power Derating | 17 |
| 3.2.2 Regular Operational Voltage Range | 17 |
| 3.2.3 Regular Operational Frequency Range | 18 |
| 3.2.4 Reactive Power Regulation | 18 |
| 3.3 Communication and Configuration | 18 |
| 3.4 Battery Management | 18 |
| 3.4.1 Charge Management | 18 |
| 3.4.2 Discharge Management | 19 |
| 4 Unpacking and Storage | 20 |
| 4.1 Unpacking and Inspection | 20 |
| 4.2 Scope of Delivery | 21 |
| 4.3 Storage | 23 |
| 5 Installation: Stack and Secure | 25 |

| | |
|---|----|
| 5.1 Safety during Mounting | 25 |
| 5.2 Location Requirements | 25 |
| 5.2.1 Environment Requirements | 26 |
| 5.2.2 Carrier Requirements | 26 |
| 5.2.3 Angle Requirements | 27 |
| 5.2.4 Clearance Requirements | 27 |
| 5.3 Installation Tools | 28 |
| 5.4 Moving the Inverter | 28 |
| 5.5 Stack and Secure | 29 |
| 6 Electrical Connection | 33 |
| 6.1 Safety Instructions | 33 |
| 6.2 Terminal Description | 33 |
| 6.3 Electrical Connection Overview | 35 |
| 6.4 EPS Wiring Diagram | 36 |
| 6.5 External Protective Grounding Connection | 38 |
| 6.5.1 External Protective Grounding Requirements | 39 |
| 6.5.2 Connection Procedure | 39 |
| 6.6 AC Cable Connection | 40 |
| 6.6.1 AC Side Requirements | 40 |
| 6.6.2 Connecting the AC Cable (EPS and GRID Cable) | 40 |
| 6.7 Smart Meter Connection | 41 |
| 6.8 PV Cable Connection | 44 |
| 6.8.1 PV Input Configuration | 44 |
| 6.8.2 Assembling and Installing the PV Connectors | 45 |
| 6.9 Battery cable connection | 47 |
| 6.9.1 Battery Power Cable Connection | 47 |
| 6.9 Communication Connection | 48 |
| 6.9.1 BAT-COM Connection | 48 |
| 6.9.2 Sieyuan Energy Meter Communication Connection | 48 |
| 6.9.4 COM Connection | 48 |
| 6.9.5 WiFi Logger Connection | 49 |
| 6.9.6 DRM-COM Connection | 49 |
| 6.9.5 Ripple Control | 50 |
| 7 Commissioning | 52 |
| 7.1 Inspection before Commissioning | 52 |
| 7.2 Powering on the System | 52 |
| 7.3 WiFi Logger Installation | 52 |
| 7.4 Download App | 53 |
| 7.5 Registration (SOLARMAN Business) | 53 |
| 7.6 Create a Plant | 53 |
| 7.7 Add a Logger | 54 |
| 7.8 Network Configuration | 54 |
| 7.9 Authorization | 57 |
| 7.11 Abnormal State Processing | 58 |

| | |
|---|----|
| 8 System Decommissioning..... | 61 |
| 8.1 Disconnecting the Inverter..... | 61 |
| 8.1.1 Disconnecting the Inverter..... | 61 |
| 8.1.2 Dismantling the Inverter..... | 61 |
| 8.1.3 Disposal of the Inverter..... | 61 |
| 8.2 Decommissioning the Battery..... | 62 |
| 9 Troubleshooting and Maintenance..... | 63 |
| 9.1 Troubleshooting..... | 63 |
| 9.2 Maintenance..... | 66 |
| 9.2.1 Maintenance Notices..... | 66 |
| 9.2.2 Inverter Routine Maintenance..... | 67 |
| 9.2.2 Battery Routine Maintenance..... | 67 |
| 10 Appendix..... | 68 |
| 10.1 Technical Data..... | 68 |
| 10.1.1 Inverter..... | 68 |
| 10.1.2 Battery..... | 70 |

1 Safety Instructions

When installing, commissioning, operating, and maintaining the product, it is crucial to strictly adhere to the labels on the product and the safety requirements outlined in the manual. Incorrect operations or procedures may result in the following:

- Injury or death to the operator or third parties.
- Damage to the product and other properties.

WARNING

- Avoid operating the product and cables (including but not limited to product movement, installation, operation, powering up, maintenance, and working at heights) under harsh weather conditions such as lightning, rain, snow, and level 6 or stronger wind.
- In case of fire, evacuate the building or the area where the product is located and immediately contact the fire department. Under no circumstances should re-entry into the burning area be attempted.

NOTICE

- Ensure that the product and terminals are securely fastened using the specified torque and appropriate tools. Failure to do so may result in product damage, and any resulting damage will not be covered by the warranty.
- Familiarize with the correct usage of tools to prevent injury to individuals or damage to the device.
- Maintain the device with sufficient knowledge of this manual and use proper tools.
 - ◆ The safety instructions provided in this manual are supplementary and may not encompass all precautions that should be followed. Always consider the actual on-site conditions when performing operations.
 - ◆ Sieyuan will not be held liable for any damages caused by the violation of general safety operation requirements, general safety standards, or any safety instructions stated in this manual.
 - ◆ When installing, operating, and maintaining the product, comply with local laws and regulations. The safety precautions provided in this manual serve as supplements to local laws and regulations.

1.1 Unpacking and Inspection

WARNING

Before decommissioning the device, carefully inspect all safety signs, warning labels, and nameplates to ensure they are in place and clearly visible. These signs and labels should not be removed or covered at any time.

NOTICE

Upon receiving the product, conduct a thorough inspection to verify the condition of the device's appearance and structural components. Additionally, compare the contents of the packaging with the ordered product to ensure consistency. If there are problems with the above inspection items, do not install the device and contact your distributor first. If the problem persists, contact Sieyuan for further assistance.

1.2 Installation Safety

DANGER

- Before installation, ensure that there is no electrical connection present.
- Before drilling, take precautions to avoid any water or electrical wiring in the wall.

CAUTION

Improper installation can result in personal injury!

- If the product supports hoisting for transportation using hoisting tools, it is strictly prohibited for anyone to remain under the product.
- When moving the product, take into account its weight and maintain balance to prevent tilting or falling.

NOTICE

Prior to operating the product, it is crucial to inspect and verify that the tools to be used have undergone regular maintenance.

1.3 Electrical Connection Safety

DANGER

Before making electrical connections, it is essential to ensure that the inverter is undamaged to prevent potential dangers!

Before electrical connections, confirm that the inverter switch and all switches connected to the inverter are set to the "OFF" position to avoid the risk of electric shock!

DANGER

The PV string generates a lethal high voltage when exposed to sunlight. Please observe the following safety precautions during electrical connections.

- Operators must wear appropriate personal protective equipment.
- Use a measuring instrument to verify that cables are voltage-free before touching DC cables.
- Adhere to all safety instructions provided in relevant documents concerning PV strings.

DANGER

There is a risk of high voltage inside the inverter that can be life-threatening. Please take note of the following precautions!

- Use specialized insulation tools during cable connections.
- Follow and strictly adhere to the warning labels on the product and the safety instructions.
- Respect all safety instructions stated in this manual and other relevant documents.

DANGER

Batteries deliver electrical power and can cause burns or fire hazards when short-circuited or incorrectly installed. Lethal voltages are present at the battery terminals and cables connected to the inverter. Avoid touching the cables and terminals to prevent severe injuries or death.

WARNING

- Damage to the product resulting from incorrect wiring is not covered by the warranty.
- Electrical connections should be performed by professionals.
- All cables used in the PV generation system must be securely attached, properly insulated, and adequately sized.

WARNING

Ensure to check the positive and negative polarity of the PV strings and connect the PV connectors to the corresponding terminals only after confirming the correct polarity. During the installation and operation of the inverter, prevent the positive or negative poles of PV strings from short-circuiting to the ground to avoid AC or DC short-circuits that could lead to equipment damage. Such damage is not covered by the warranty.

NOTICE

Comply with the safety instructions regarding PV strings and adhere to the regulations applicable to the local grid.

1.4 Operation Safety

DANGER

- Do not touch the enclosure of the inverter while it is running.
- It is strictly prohibited to plug or unplug any connectors on the inverter while it is running.
- Avoid contact with any terminals of the inverter while it is running to prevent electric shock.
- Do not disassemble any parts of the inverter while it is running, as it may result in electric shock.
- Refrain from touching any hot parts of the inverter, such as the heat sink, while it is running to avoid burns.
- If the inverter is equipped with a DC switch, do not operate it while the inverter is running to prevent device damage or personal injury.

1.5 Maintenance Safety

DANGER

There is a risk of inverter damage or personal injury resulting from incorrect service procedures!

- Prior to performing any service work, disconnect the grid-side AC circuit breaker and check the status of the inverter. If the inverter indicator is off, wait until nighttime before disconnecting the DC switch. If the inverter indicator is on, you can directly disconnect the DC switch.
- After the inverter has been powered off for at least 10 minutes, use a professional instrument to measure the voltage and current. Only when there is no voltage or current detected, and operators are wearing proper protective equipment, can they proceed with operating and maintaining the inverter.
- Even if the inverter is shut down, it may still be hot and cause burns. Wear protective gloves before operating the inverter after it cools down.

DANGER

Touching the power grid or the contact points and terminals on the inverter connected to the power grid can result in electric shock!

- The power grid side may have voltage. Always use a standard voltmeter to ensure there is no voltage before touching.

CAUTION

To prevent misuse or accidents caused by unauthorized personnel, prominently display warning signs or designate safety warning areas around the product.

NOTICE

To avoid the risk of electric shock, refrain from performing any maintenance operations beyond those described in this manual. If necessary, contact your distributor first. If the issue persists, contact Sieyuan for maintenance. Failure to do so may result in losses that are not covered by the warranty.

1.6 Disposal Safety

WARNING

Please dispose of the product in accordance with the applicable local regulations and standards to prevent property losses or injuries

1.7 Battery Safety

DANGER

- Power off the equipment before performing any operations to avoid danger. Strictly follow the safety precautions outlined in this manual and the safety labels on the equipment during operation. The battery system maintains a high voltage during operation.
- The inverter used with the battery must be approved by the battery manufacturer. You can obtain the approved list of batteries and matched inverters through the official website.
- Do not disassemble, modify, or replace any part of the battery or power control unit without official authorization from the manufacturer. Unauthorized actions may cause electrical shock or equipment damage, for which the manufacturer will not be held responsible.
- Avoid hitting, pulling, dragging, squeezing, or stepping on the equipment, and do not expose the battery to fire. Mishandling the battery may lead to explosions.
- Keep the battery away from high temperature environments. Ensure there is no direct sunlight or heat source near the battery. Temperatures exceeding 60°C can cause fires.
- Do not use a defective, broken, or damaged battery or power control unit. Damaged batteries may leak electrolyte.
- During transportation, take precautions to protect the battery pack and its components. Ensure that transportation personnel are trained and record all transportation operations. Keep the equipment balanced to prevent falls.
- The battery equipment is heavy. Assign personnel according to its weight capacity to avoid exceeding the carrying capacity of the human body and causing injuries.
- If the battery fails to start, contact after-sales service immediately to prevent permanent damage to the battery.
- Do not move the battery system if it is connected to external battery modules. Contact after-sales service for any battery replacement or addition needs.

CAUTION

- Ensure the battery system is safeguarded during the transportation and storage phases.

- Trained professionals should handle transportation and maintain a record of all operations.
- Keep the equipment stable to prevent damage and minimize the risk of personal injuries.
- Maintain a minimum distance of 30mm between cables and heating components or heat sources to prevent damage to the cable insulation.
- Tie cables of the same type together for organization and avoid entanglement or crossing of cables.
- Keep cables of different types at least 30mm apart to prevent interference.
- Follow proper cable management practices to ensure safety.

Label Description

| Symbol | Explanation |
|---|--|
|  | Do not disassemble the Battery pack |
|  | Do not immerse the battery pack in water |
|  | Do not short-circuit the battery |
|  | Do not leave the battery near by fire |
|  | Read Technical Manual Before Servicing |
|  | Flammable Fire Hazard warning symbol |
|  | Danger electrical hazard high voltage |
|  | CE mark of conformity. |



Regulatory compliance mark.



UKCA mark of conformity.



Read the user manual before maintenance!



Recycling symbol



No waste.

1.8 Emergency Measures

1.8.1 Battery Electrolyte Leakage

In case of electrolyte leakage from the battery module, it is crucial to avoid any contact with the leaked liquid or gas due to its corrosive nature. The electrolyte can cause skin irritation or chemical burns to individuals. If anyone accidentally comes into contact with the leaked substance, the following steps should be taken:

i: Inhalation of the leaked substance:

Immediately evacuate from the contaminated area. Seek immediate medical assistance.

ii: Eye contact with the leaked substance:

Rinse the affected eyes with clean water for at least 15 minutes. Seek immediate medical assistance.

iii: Skin contact with the leaked substance:

Thoroughly wash the affected area with soap and clean water. Seek immediate medical assistance.

iv: Ingestion of the leaked substance:

Induce vomiting, if possible. Seek immediate medical assistance.

It is crucial to prioritize safety and take prompt action by seeking appropriate medical attention in case of any contact with the leaked electrolyte.

1.8.2 Fire

When the ambient temperature exceeds 150°C, there is a risk of the battery exploding. In the event of a fire involving the battery, it is important to be aware that poisonous and hazardous gases may be released.

To effectively respond to a battery fire, please follow these guidelines:

- Ensure the availability of a carbon dioxide (CO₂) extinguisher, Novac1230, or FM-200 nearby. These types of fire extinguishers are suitable for tackling electrical fires, including battery fires.
- Avoid using water or ABC dry powder extinguishers to extinguish the fire. Water can spread the fire and dry powder may not be effective in suppressing a battery fire.
- If a fire occurs, contact the local fire department immediately. Firefighters should be equipped with full

protective clothing and self-contained breathing apparatus to safely handle the situation.

It is crucial to prioritize safety and take appropriate measures to handle battery fires, including the use of suitable fire extinguishers and protective equipment for firefighting personnel.

1.9 EU Declaration of Conformity

Shanghai Sieyuan Watten Technology Co., Ltd. hereby declares that the inverter without wireless communication modules sold in the European market meets the requirements of the following directives:

- Electromagnetic compatibility Directive 2014/30/EU (EMC)
- Electrical Apparatus Low Voltage Directive 2014/35/EU (LVD)
- Battery Directive 2006/66/EC and Amending Directive 2013/56/EU
- Waste Electrical and Electronic Equipment 2012/19/EU
- Registration, Evaluation, Authorization and Restriction of Chemicals (EC) No.RZUN2023-2770 (REACH)

You can download the EU Declaration of Conformity on the official website: <https://www.swatten.com>

2 Product Description

2.1 System Introduction

The inverter is a transformerless 1-phase hybrid inverter that plays a crucial role in the power system. Its primary function is to convert the direct current power generated by PV modules or batteries into AC current that is compatible with the utility grid. The inverter enables the feed-in of AC current to the utility grid. It is suitable for use in both on-grid and off-grid PV systems.

One of the key features of the 1-phase hybrid inverters is the integration of an Energy Management System (EMS). This system allows for effective control and optimization of the energy flow within the system. By intelligently managing the energy, the inverter enhances the self-consumption of the system, maximizing the utilization of generated power.

WARNING

- Operate the inverter only with PV strings having class II protection (IEC 61730, application class A). Avoid grounding the positive or negative poles of the PV strings to prevent damage to the inverter.
- Warranty does not cover damages caused by faulty or damaged PV installations.
- Only use the inverter as described in this document; any other use is not permitted.
- During installation and operation, ensure that the positive and negative polarities of PV strings and batteries do not short-circuit to the ground to avoid equipment damage. Warranty does not cover damage resulting from such short-circuits.
- Avoid short-circuiting the EPS port during operation to prevent severe damage to the inverter or power distribution system. Such damage is not covered by the Sieyuan warranty.
- Do not connect any local load between the inverter and the AC circuit breaker.

NOTICE

- In a TT utility grid, ensure that the N line voltage to ground is 30V or below.
- For off-grid applications, the utility grid must be a TN system.
- The system is not suitable for powering life-sustaining medical devices, and it does not guarantee EPS power in all situations.
- The inverter is designed for the specific scenarios described in this manual.

2.2 Product Introduction

Model Description

The model description is follows (take SiH-6kW-SH as an example):

SiH: Sieyuan Hybrid inverter

6kW: Power level

SH: Single phase, High voltage

NOTICE

The Single phase High voltage Inverter can be connected to batteries of models SieB-H9600-F, SieB-H12K8-F, SieB-H16K0-F, and SieB-H19K2-F.

Appearance

The image shown here is for reference only. The actual product received may differ.

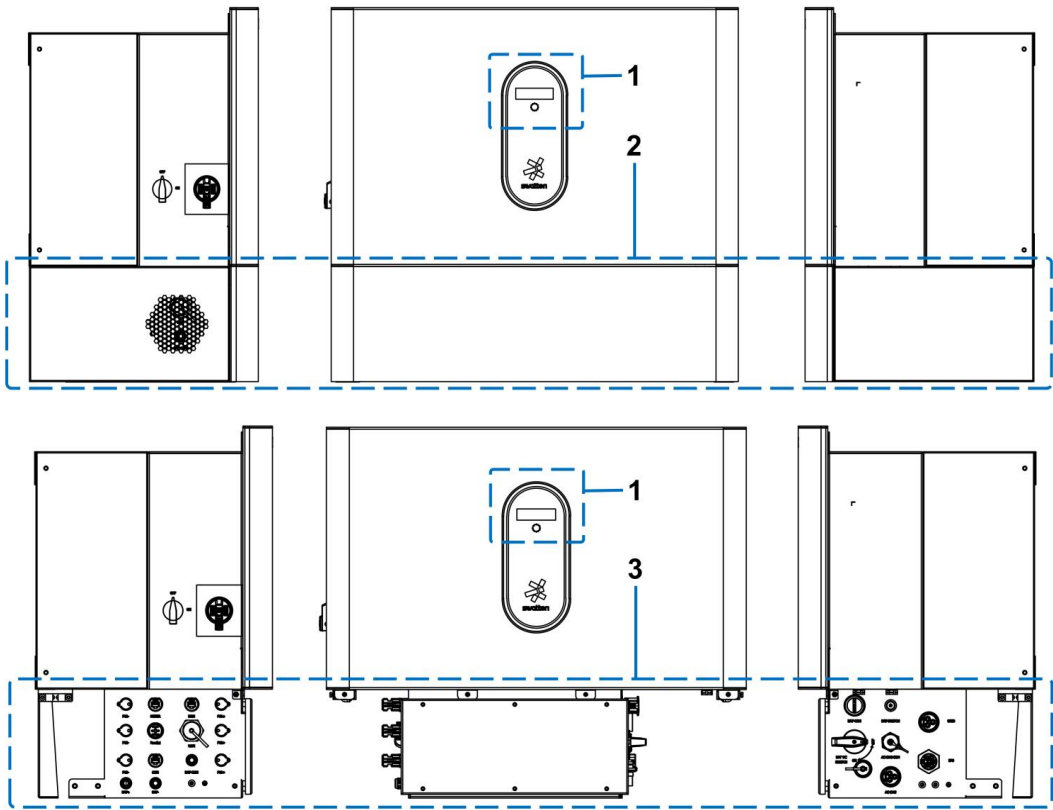


figure 2-1 Inverter Appearance

| No. | Name | Description |
|-----|----------------------------|--------------------------|
| 1 | LED indicator panel | LED screen |
| 2 | Cover plates | Cover plates |
| 3 | Electrical connection area | Ports of hybrid inverter |

Dimensions

The following figure shows the dimensions of the inverter.

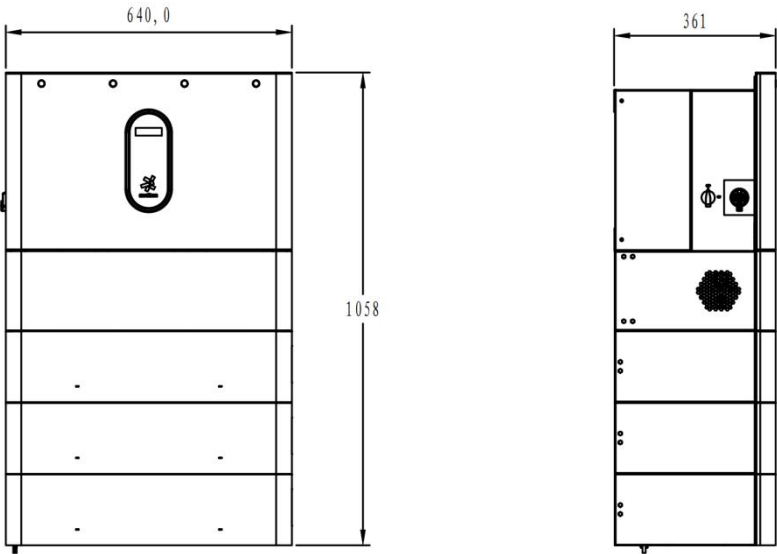
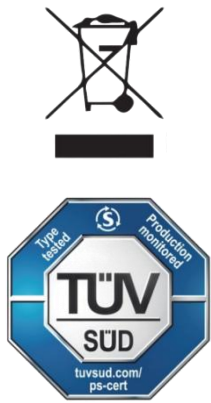


figure 2-2 Dimensions of the Inverter

| Inverter Model | W(mm) | H(mm) | D(mm) |
|----------------|-------|-------|-------|
| Inverter | 640 | 564 | 361 |
| Battery module | 640 | 172 | 361 |

2.3 Symbols on the Product

| Symbol | Explanation |
|---|---|
| PV | Parameters on the PV side. |
| BAT | Parameters on the Battery side. |
| AC-Grid | Parameters on the AC on-grid side. |
| AC-BACKUP | Parameters on the AC EPS side. |
|  | <p>Danger to life due to high voltages!</p> <p>Do not touch live parts for 10 minutes after disconnection from the power sources.</p> <p>Only qualified personnel can open and maintain the inverter.</p> |
|  | Read the user manual before maintenance! |
|  | <p>There is a deadly high pressure danger!</p> <p>Only professional and qualified personnel are allowed to install and operate!</p> |
| RoHS | RoHS mark of conformity. |
|  | Regulatory compliance mark. |
| UK CA | UKCA mark of conformity. |
| CE | CE mark of conformity. |



Do not dispose of the inverter together with household waste.

TÜV mark of conformity.

2.4 Indicator Status

2.4.1 Inverter Indicator Status

The LED panel with a display screen and an indicator is on the front of the inverter.

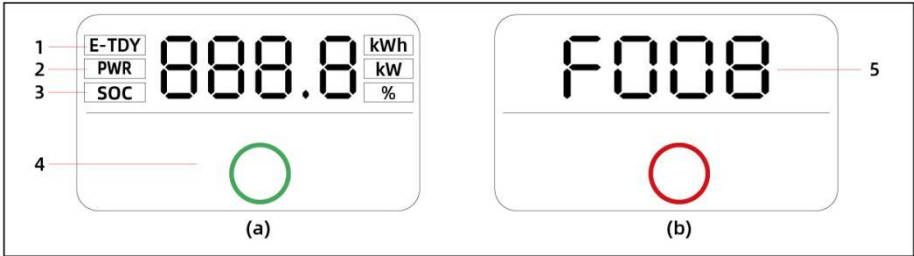





Figure 2-3 LED Panel

| (a) Normal state | | | (b) Error state | | |
|------------------|---------------|---|-----------------|------|-------------|
| No. | Name | Description | No. | Name | Description |
| 1 | E-day | Today's energy yield | | | |
| 2 | PWR | Real-time AC output power | | | |
| 3 | SOC | Battery SOC (State of Charge) | | | |
| 4 | LED indicator | To indicate the working state of the inverter. Touch it to switch the information in normal state or view multiple error codes in error state. | | | |
| 5 | Error code | The error code in the figure is just an example. | | | |

- In normal operation, the LED indicator will alternate the display of E-day, Pac, and SOC information. Additionally, users have the option to switch between the displayed information by simply touching the LED indicator.
- During an error state, touching the LED indicator will provide access to multiple error codes for easy viewing and troubleshooting.
- In the event of no user activity for 5 minutes, the display screen will automatically turn off to conserve power. Users can reactivate the display screen by simply touching the LED indicator.

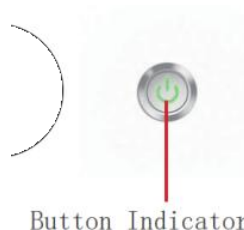
The following chart description of the LED indicator

| LED color | State | Definition |
|-----------|-------|------------|
|-----------|-------|------------|

| | | |
|---|----------|--|
|  Green | On | The inverter is operating normally. |
| | Flashing | The inverter is at standby or startup state (not feeding power into the grid). |
|  Red | On | A system fault has occurred. |
| | Off | Both the AC and DC sides are powered down. |
|  Grey | | |

WARNING

Please be aware that voltage may still be present in the AC side circuits even after the indicator is turned off. It is crucial to prioritize electrical safety precautions during operation.

2.4.2 Battery Indicator Status

| Button Indicator | Status |
|------------------|--------------------|
| Green | Standby or Working |
| Red | Alarming or Faulty |

2.5 DC Switch

The DC switch serves as a means to safely disconnect the DC circuit whenever required. To initiate the inverter's operation, it automatically functions when the input and output requirements are met. However, in the event of a fault or when there is a need to halt the inverter, rotating the DC switch to the "OFF" position will stop its operation.

Note:

Turn the DC switch to the "ON" position before restarting the inverter.

2.6 PV Energy Storage System (PV ESS)**2.6.1 PV Energy Storage System (PV ESS)**

The following figure shows inverter application in a PV energy storage system.

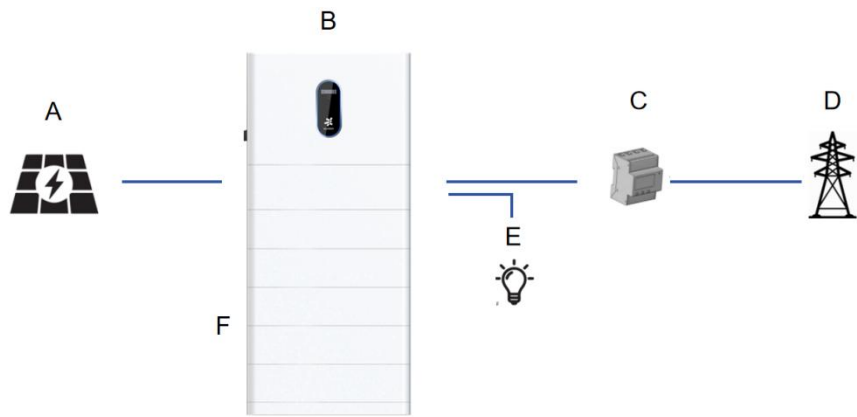
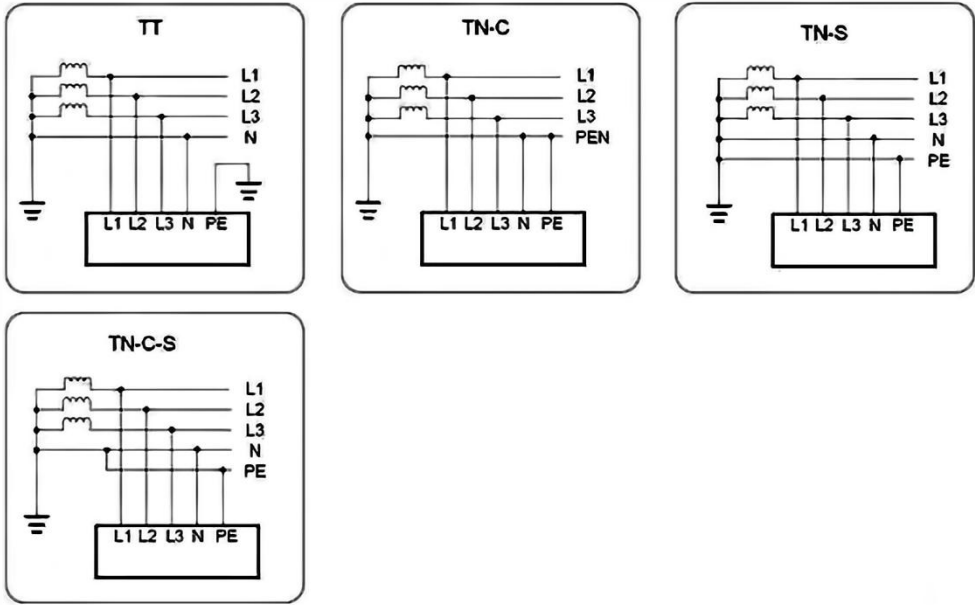


figure 2-4 PV Energy Storage System

| Item | Description | Note |
|------|--------------------|--|
| A | PV strings | Compatible with monocrystalline silicon, polycrystalline silicon, and thin-film modules without grounding. |
| B | Inverter | SiH-5kW-SH/SiH-6kW-SH |
| C | Metering device | Meter cupboard with power distribution system. |
| D | Utility grid | TT, TN-C, TN-S, TN-C-S. |
| E | EPS Loads | Loads, connected to inverter EPS port, which need uninterrupted power supply. |
| F | Battery (optional) | A Li-ion battery. |

The following figure shows the common grid configurations.



2.6.2 Declaration For EPS Function

DANGER

This product is not intended for supplying power to life-sustaining medical devices. Power outages may pose a risk to life when relying on this product for such purposes.

The following statements outline Sieyuan's general policies concerning the hybrid inverters described in this

document:

1 For hybrid inverters, the electrical installation typically involves connecting the inverter to both PV modules and batteries. In EPS mode, if there is no available power from batteries or PV modules, the EPS power supply will be automatically terminated. Sieyuan bears no responsibility for any consequences resulting from failure to comply with this instruction.

2 Normally, the switching time for activating the EPS mode is less than 10 ms. However, certain external factors may cause the system to fail in EPS mode. Therefore, users must be aware of the following conditions and adhere to the instructions:

- Do not connect loads that require a stable energy supply for reliable operation.
- Do not connect loads whose total capacity exceeds the maximum EPS capacity.
- Do not connect loads that may cause high start-up current surges, such as air conditioners, high-power pumps, vacuum cleaners, and hair dryers.
- Battery current may be limited due to factors including temperature and weather conditions.

Declaration For EPS Overload Protection

In the event of overload protection, the inverter will automatically restart. If overload protection is repeatedly triggered, the restart time may increase (up to a maximum of 10 minutes). To avoid this, reduce the power of the EPS load to remain within the specified limits or remove loads that may cause high start-up current surges.

2.6.3 Energy Management

The battery discharges to provide energy to loads. If the battery is empty or there is not enough power from the battery system, the grid shall supply power to EPS loads and normal loads.

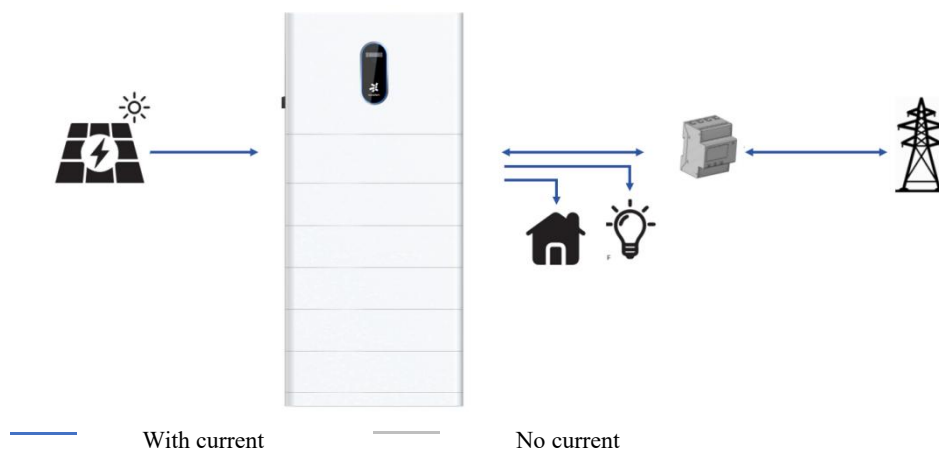
When the grid is available, the hybrid inverter activates the bypass function. This allows the EPS loads to be directly connected to the grid via the integrated bypass switch in the inverter.

If the Smart Energy Meter is either not present or experiencing abnormalities, the inverter will continue to operate normally. However, the battery will only be allowed to charge and not discharge. In this scenario, the feed-in power setting becomes ineffective, and the DO function for optimized mode will be disabled.

Energy Management during Daytime

The energy management system (EMS) defaults to self-consumption mode. The following scenarios illustrate the energy management process:

- Scenario 1: PV power generation > Load power consumption
 - First, PV power is prioritized for the EPS loads first, followed by normal loads and then the battery.
 - If the battery is fully charged, any excess power will be fed back to the grid. The feed-in power will not exceed the feed-in limitation value set in the initial settings.
- Scenario 2: PV power generation < Load power consumption
 - In this case, the battery will discharge to compensate for the energy shortfall.
 - If the combined power from the PV and battery is still insufficient to meet the load power demand, the inverter will draw power from the mains (grid) to make up for the deficit.

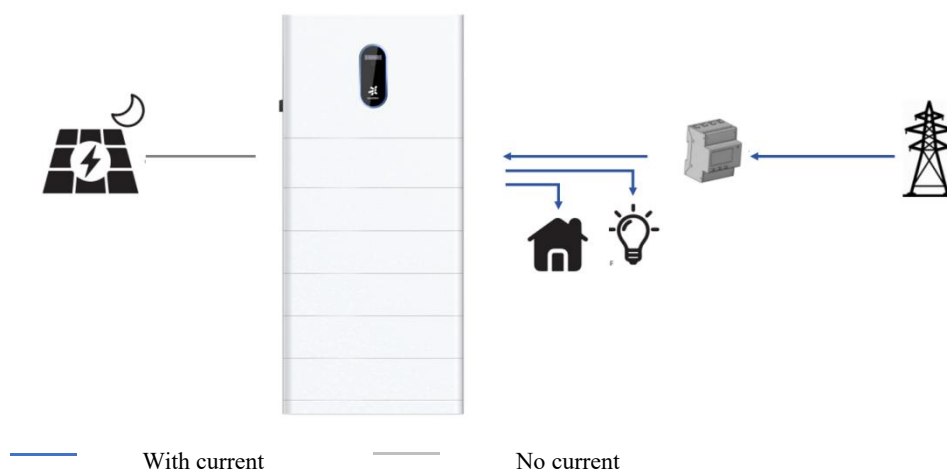


Energy Management during Night

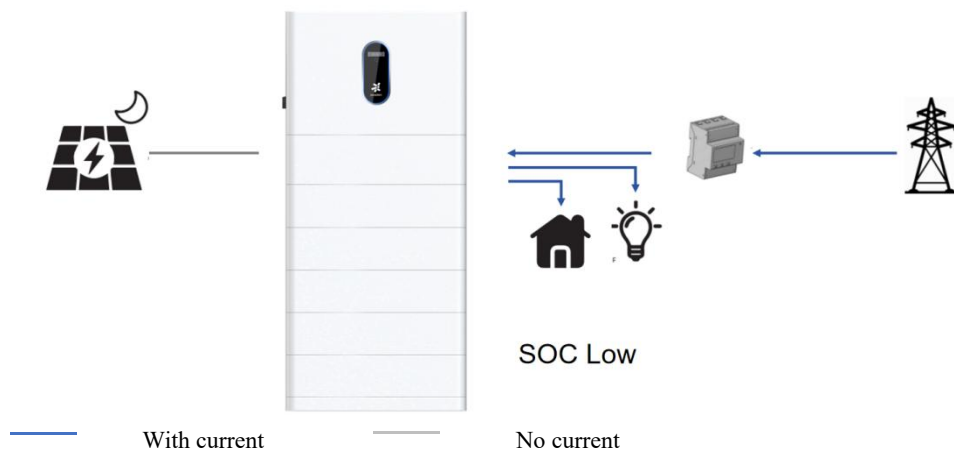
During the nighttime period, energy management operates as follows:

- **Battery Discharge:** With available energy, the battery will discharge to provide power for the loads. It acts as the primary source of power during this time.
- **Grid Power Supply:** If the discharge power of the battery is insufficient to meet the load requirements, the grid will automatically supply power to the loads. This ensures a continuous and uninterrupted power supply, even if the battery capacity is depleted or unable to sustain the load demand.

By combining the discharge capability of the battery and the EPS power from the grid, the system ensures reliable and continuous power supply during nighttime operations.



During night, when the battery is empty, it will enter into standby mode. In this case, the grid will supply all power for loads.



- Control of power fed into the grid.
- Charging and discharging of batteries.
- Maximum power restrictions.

3 Function Description

3.1 Safety Function

3.1.1 Protection

Several protective functions are integrated in the inverter, including short circuit protection, grounding insulation resistance surveillance, residual current protection, anti-islanding protection, DC overvoltage / over-current protection, etc.

3.1.2 Earth Fault Alarm

The device is equipped with a grounding fault alarm system. In the event of inadequate or nonexistent grounding on the AC side, an audible alarm will sound and the LED indicator will illuminate in red.

3.2 Energy Conversion and Management

The inverter efficiently transforms the DC power derived from either the PV array or the battery into AC power that meets the specifications of the grid. Additionally, it facilitates the transfer of DC power from the PV panel to the battery.

Incorporating a bidirectional converter, the inverter has the capability to both charge and discharge the battery, ensuring optimal utilization of energy.

To maximize the power output from PV strings that may have varying orientations, tilts, or module structures, the inverter employs multiple string Maximum Power Point (MPP) trackers. These trackers enable the inverter to extract the maximum available power from each PV string, thereby enhancing overall system efficiency.

3.2.1 Power Derating

Power derating is implemented as a protective measure to safeguard the inverter against potential overload or faults. Moreover, the derating function can be activated in accordance with the requirements specified by the utility grid. Various situations that may necessitate inverter power derating include:

- Over-temperature conditions, which encompass both ambient temperature and module temperature.
- High input voltage levels.
- Grid under-voltage occurrences.
- Grid over-frequency events.
- Power factor deviations from the rated values.
- High altitude environments.

For seamless integration with demand response capabilities, the inverter is equipped with a terminal block designed to connect to a demand response enabling device (DRED). This DRED facilitates the activation of demand response modes (DRMs). When triggered, the inverter promptly detects and initiates a response to all supported demand response commands within a swift 2-second timeframe.

3.2.2 Regular Operational Voltage Range

The inverters are designed to operate effectively within the allowable voltage range for a specified observation time. The specific conditions for setting these voltage range parameters depend on whether the connection is for a normal operational start-up or an automatic re-connection following a tripping event

triggered by interface protection.

If the voltage level deviates from the defined operational levels, the inverter will disconnect from the grid within the protection time frame. In the event of a short-lived disturbance that lasts for a duration shorter than the required protection time, the inverter can automatically reconnect to the grid once the voltage level returns to normal operating levels after the disturbance subsides.

3.2.3 Regular Operational Frequency Range

The inverter is designed to operate within its specified frequency range for a minimum observation time. The specific conditions for setting these frequency range parameters depend on whether the connection is for a normal operational start-up or an automatic re-connection following a tripping event triggered by interface protection..

If the frequency level falls outside the defined operational range, the inverter will disconnect from the grid. In the case of a temporary disturbance that lasts for a duration shorter than the required protection time, the inverter can automatically reconnect to the grid once the frequency level returns to normal operating levels after the disturbance subsides.

3.2.4 Reactive Power Regulation

The inverter offers reactive power regulation modes to provide grid support. The specific reactive power regulation mode can be configured and adjusted through the SOLARMAN App.

3.3 Communication and Configuration

The inverter offers RS485, Ethernet, WLAN, and CAN ports for device and system monitoring. These ports allow configuration of parameters for optimal operation. Inverter information is accessible through the SOLARMAN Smart App.

The import power refers to the total power obtained from the grid, which encompasses the power used to charge the battery from the grid through the inverter, the power consumed by local loads, and the power supplied to loads connected to the inverter's EPS port from the grid. To comply with local regulations, it is necessary to calculate the maximum allowable system power based on the wire size and circuit breaker required for the selected model. This value can be configured as the Import Power Limit, which can be conveniently adjusted using the SOLARMAN App.

3.4 Battery Management

To optimize battery lifespan, the inverter will conduct battery charging, discharging, and maintenance activities based on the battery status information received from the Battery Management System (BMS).

NOTICE

If the battery has remained unused or has not been fully charged for an extended period of time, it is advisable to manually perform a full charge every 15 days. This practice helps to maintain the battery's lifespan and optimal performance.

3.4.1 Charge Management

EPS Charge Management

The emergency charge management function is to protect the battery from the damage caused by long time excessive discharge. The inverter cannot respond to discharge command during emergency charge. The

following tables describe the emergency charge conditions for different types of batteries.

Table 3-1: EPS Charge Management for Li-ion Battery

| Status | Conditions |
|---------|--|
| | Either of the following conditions is met: |
| Trigger | - A battery under-voltage warning is triggered. - An emergency charge command is reported to the inverter. |
| | All the following conditions are met: |
| Finish | - The battery under-voltage warning is cleared. - The emergency charge command reported to the inverter is cleared. |

Table 3-2 Default SOC Conditions for Li-ion Battery EPS Charge

| Type | Trigger SOC | Finishing SOC |
|---------|-------------|---------------|
| SiB-H-F | SOC = 0% | SOC > 10% |

Normal Charge Management

During normal operation, when the battery voltage is within the acceptable range, the inverter is capable of charging the battery if the PV power exceeds the load power. It ensures that the battery is not overcharged.

The maximum charge current is restricted to the lower value between the following:

- The maximum charge current specified by the inverter.
- The maximum/recommended charge current recommended by the battery manufacturer.

As a result, the battery charge power may not reach the nominal power level.

3.4.2 Discharge Management

Discharge Management

Discharge management is implemented to prevent deep discharging of the battery, ensuring its protection.

The maximum allowable discharge current is limited to the lower value between the following:

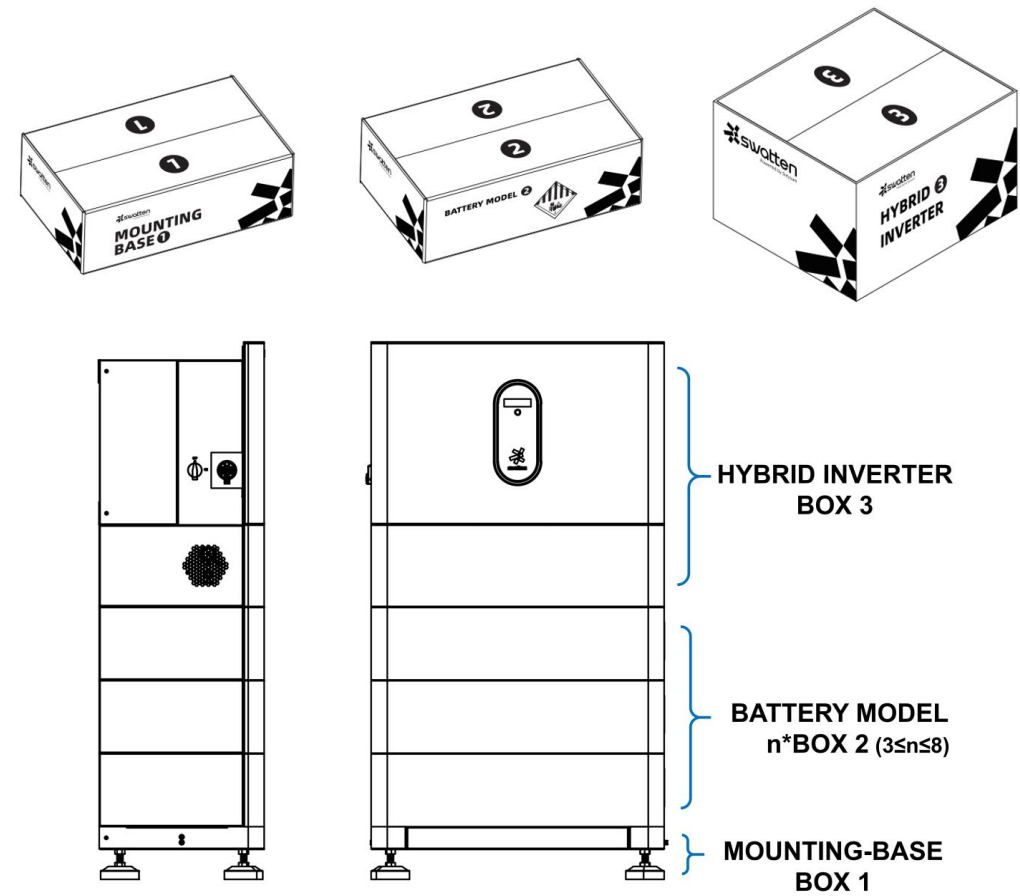
- The maximum discharge current specified by the inverter.
- The maximum/recommended discharge current recommended by the battery manufacturer.

As a result, the battery discharge power may not reach the nominal power level.

4 Unpacking and Storage

4.1 Unpacking and Inspection

You will receive three types of boxes, as shown in the figure below.



| Item | Description |
|-------|---|
| BOX 1 | Including mounting-base, mounting bracket, cover plates for hybrid inverter. |
| BOX 2 | Each All-in-one system requires at least 3 batteries and at most 8 batteries. |
| BOX 3 | Including hybrid inverter, accessories box. |

The product undergoes comprehensive testing and rigorous inspection prior to shipment. However, there is still a possibility of damage occurring during transit. Therefore, it is essential to conduct a thorough inspection upon receiving the product. Please follow these steps:

- Examine the packaging case for any visible signs of damage.
- Verify the contents of the delivery to ensure completeness, referring to the packing list.
- After unpacking, carefully inspect the inner contents for any signs of damage.

If any damage or incompleteness is detected, promptly contact Sieyuan or the transport company. It is advisable to provide photographs of the damage to facilitate the resolution process. It is important not to discard the original packaging case. When decommissioning the product, it is recommended to store it in the original packaging case for safekeeping.

NOTICE

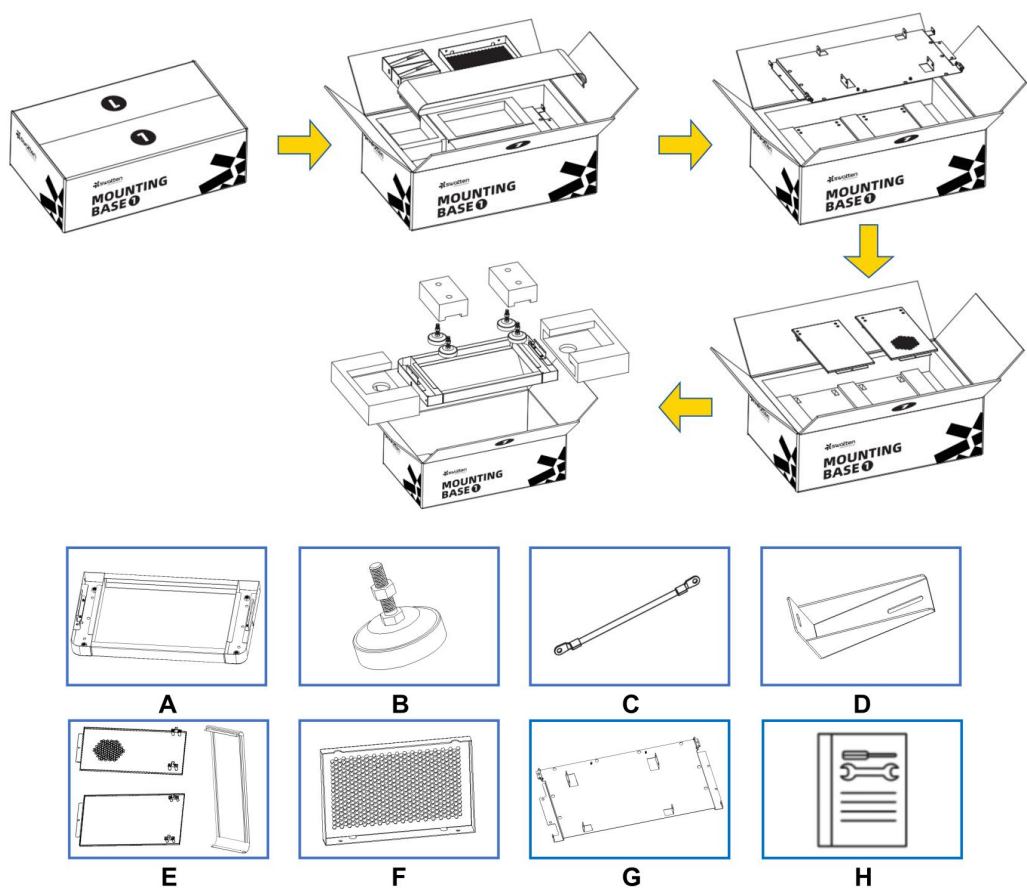
Upon receiving the product, it is important to conduct a thorough inspection to ensure its integrity and avoid

- any potential damage. Please follow these steps:
- Examine the appearance and structural parts of the device for any signs of damage.
 - Verify that the contents of the package match the items listed on the packing list. Ensure that you have received the correct product.
 - If any issues or discrepancies are found during the inspection, refrain from installing the device and immediately contact your distributor for assistance. If the problem persists or your distributor is unable to resolve the issue, promptly reach out to Sieyuan for further support.

When unpacking the product, exercise caution to avoid causing any damage, especially if using tools. Take care to handle the product with care and ensure that no unintentional harm is inflicted upon it.

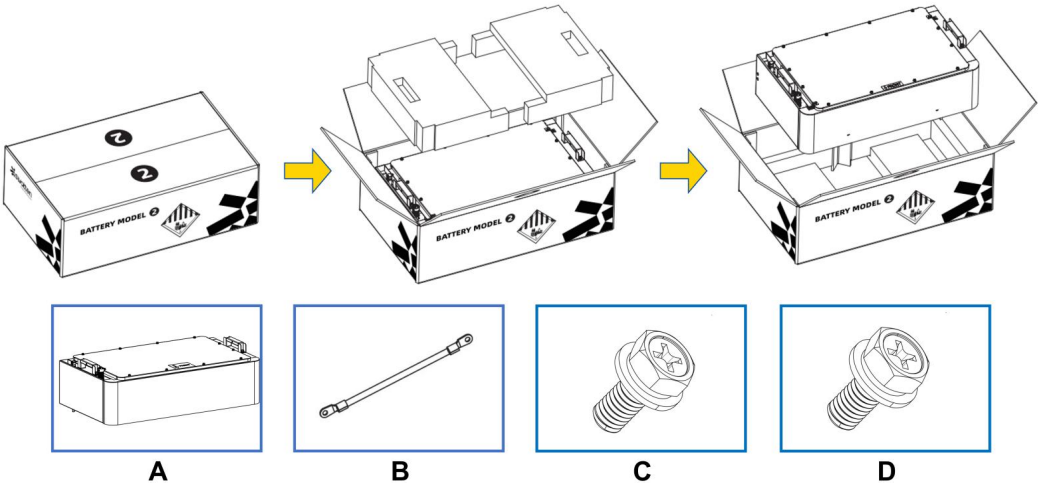
4.2 Scope of Delivery

BOX 1 MOUNTING-BASE (Open this box FIRST please.)



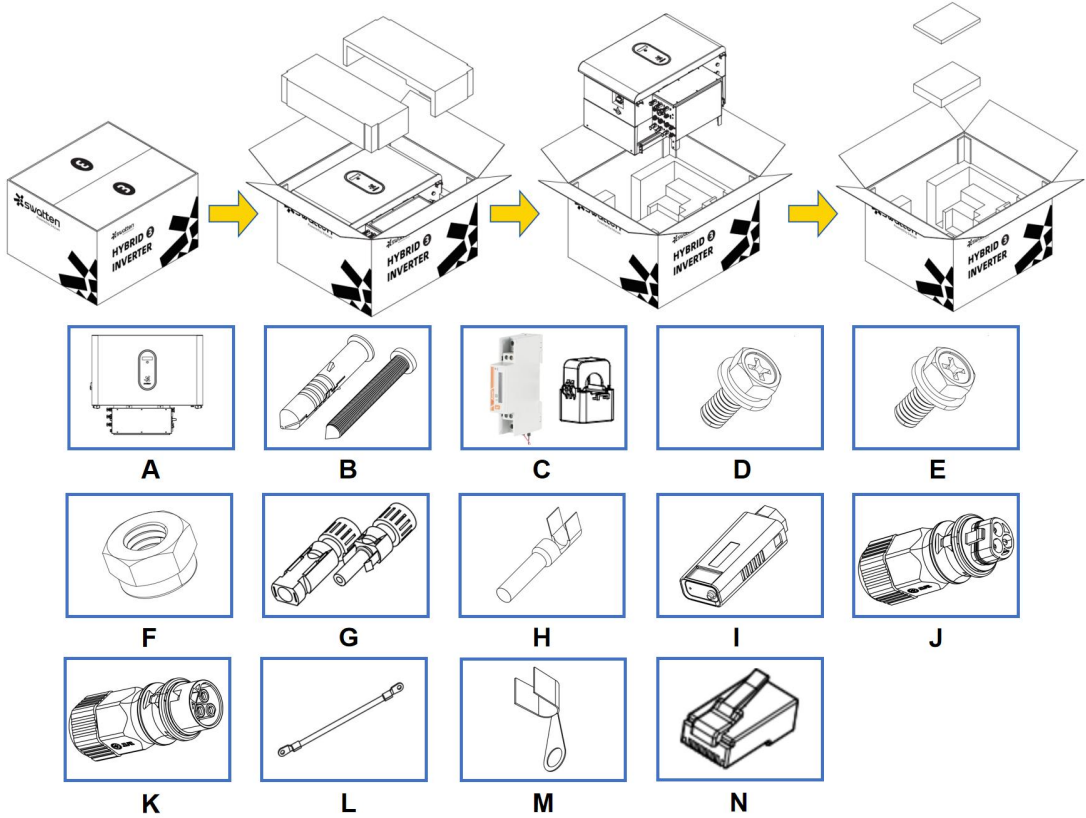
| Item | Description | Qty |
|------|--|-----|
| A | Mounting-base | 1 |
| B | Base support feet | 4 |
| C | Grounding cable | 1 |
| D | Secure bracket | 4 |
| E | Side cover plate | 3 |
| F | Secure plate on the back of the inverter | 1 |
| G | Secure plate on the bottom of the inverter | 1 |
| H | Quick start guide | 1 |

BOX 2 Battery



| Item | Description | Qty |
|------|---|-----|
| A | Battery module | 1 |
| B | Grounding cable | 1 |
| C | M5 SCREWS (M5x12 for grounding cables secure) | 1 |
| D | M4 SCREWS (M4x10 for battery modules secure) | 1 |

BOX 3 Hybrid Inverter



| Item | Description | Qty |
|------|---|-----|
| A | Inverter | 1 |
| B | Expansion Plug Set | 4 |
| C | Smart Energy Meter & Current Transformer (1 CT) | 1 |

| | | |
|---|------------------------------------|-----------|
| D | M5 Screws and Washers, M5×12 | 15 |
| E | M4 Screws and Washers, M4×10 | 5 |
| F | M5 Nuts | 3 |
| G | MC4 Positive & Negative Connector* | 2~3 pairs |
| H | Crimp contact* | 2~3 pairs |
| I | WiFi Logger | 1 |
| J | GRID terminal | 1 |
| K | EPS/AC CHG terminal | 2 |
| L | Grounding cable | 2 |
| M | Grounding terminal | 2 |
| N | RJ45 | 5 |

4.3 Storage

Inverter

To ensure the proper storage of the inverter when it is not immediately installed, please adhere to the following guidelines:

- Store the inverter in its original packing case, ensuring the desiccant is kept inside.
- Maintain a storage temperature between -30°C and +70°C at all times.
- Maintain a storage relative humidity between 0% and 95%, ensuring it is non-condensing.
- If stacking storage is necessary, ensure that the number of stacking layers does not exceed the limit indicated on the outer side of the packing case.
- Keep the packing case upright during storage.
- If the inverter needs to be transported again, ensure it is properly packed before loading and transporting.
- Avoid storing the inverter in areas susceptible to direct sunlight, rain, or strong electric fields.
- Avoid placing the inverter near items that may affect or damage it.
- Store the inverter in a clean and dry location to prevent dust and water vapor from causing erosion.
- Avoid storing the inverter in areas with corrosive substances or at risk of being accessed by rodents and insects.
- Conduct periodic inspections, at least once every six months.
- If any signs of insect or rodent bites are detected, promptly replace the packaging materials.
- If the inverter has been stored for more than a year, it is necessary to have it inspected and tested by professionals before putting it into operation.

NOTICE

It is crucial to store the inverter in accordance with the specified storage requirements. Failure to meet these requirements may result in product damage, and it's important to note that such damage caused by improper storage is not covered by the warranty. To ensure the safekeeping of the inverter and maintain warranty coverage, please adhere to the storage guidelines provided.

Battery

If the equipment is not intended for immediate installation or use, please ensure that the storage environment meets the following requirements:

- Do not unpack the outer packing box or discard the desiccant.

- If the equipment is not installed within three days of unpacking, repack and store it in the original packing box.
- Follow the labels and requirements on the packing box when stacking the equipment.
- Take caution when stacking the equipment to prevent it from falling.
- Keep the equipment away from flammable, explosive, and corrosive substances.
- Store the equipment in a cool place away from direct sunlight.
- Ensure the storage location is clean, with appropriate temperature and humidity levels to prevent condensation.
- Maintain a State of Charge (SOC) between 25% and 50% during storage. Perform charge-discharge cycles every six months.
- Recommended storage temperature: 0°C to 35°C (for periods less than one year), -20°C to 0°C or 35°C to 45°C (for periods less than one month).
- Recommended storage humidity: 0% to 95% RH (without condensation). Do not install the battery if moisture or condensation is present.

5 Installation: Stack and Secure

WARNING

Respect all local standards and requirements during mechanical installation.

5.1 Safety during Mounting

DANGER

Make sure there is no electrical connection before installation. Before drilling, avoid the water and electricity wiring in the wall.

WARNING

The performance of the system can be affected by an inadequate installation environment. To optimize system performance, please consider the following:

- Install the inverter in a well-ventilated area to promote proper airflow and heat dissipation.
- Ensure that the heat dissipation system or vents of the inverter are not obstructed by objects or debris.
- Avoid installing the inverter in environments where flammable or explosive materials are present, as well as areas prone to smoke accumulation.

CAUTION

Improper handling may cause personal injury!

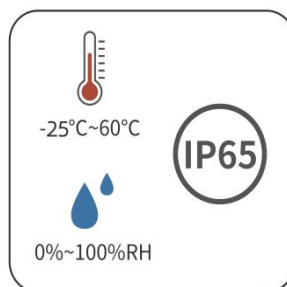
- When moving the inverter, be aware of its weight and keep the balance to prevent it from tilting or falling.
- Wear proper protective equipment before performing operations on the inverter.
- The bottom terminals and interfaces of the inverter cannot directly contact the ground or other supports. The inverter cannot be directly placed on the ground.

By following these guidelines, you can help maintain an optimal installation environment and ensure the reliable performance of the inverter.

5.2 Location Requirements

To ensure safe operation, long service life, and expected performance, it is important to select an optimal mounting location for the inverter. Consider the following guidelines:

- The inverter, if it has a protection rating of IP65, can be installed both indoors and outdoors, providing flexibility in choosing the mounting location.
- Install the inverter in a location that allows for easy electrical connection, operation, and maintenance. This will facilitate access to the inverter for any necessary maintenance or troubleshooting tasks.

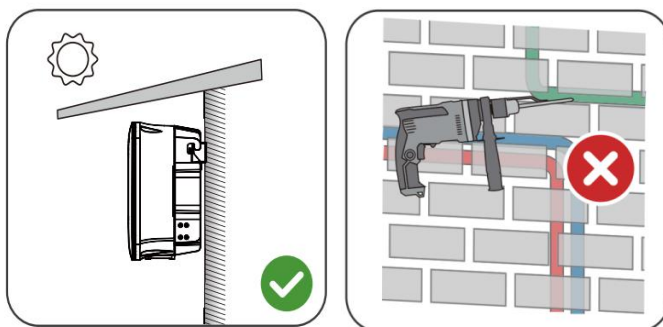


5.2.1 Environment Requirements

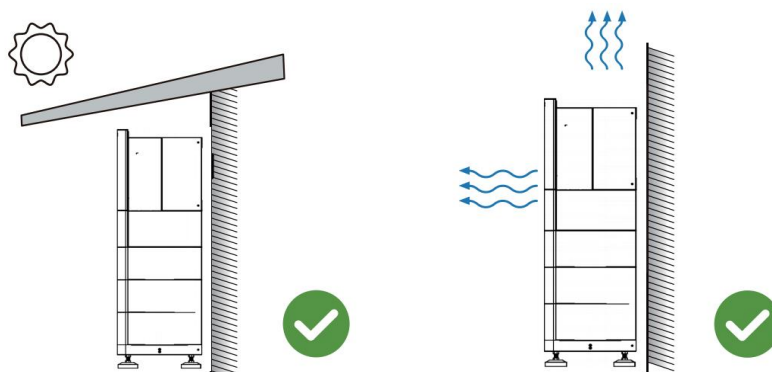
- Ensure an installation environment free from flammable or explosive materials.



- Choose a location that is not accessible to children to ensure their safety.
- Ensure that the ambient temperature and relative humidity of the installation site meet the specified requirements.
- To prolong the service life of the inverters, avoid direct exposure to sunlight, rain, and snow. Consider installing them in sheltered areas to provide protection from these elements.



- Ensure proper ventilation for the inverter with adequate air circulation.



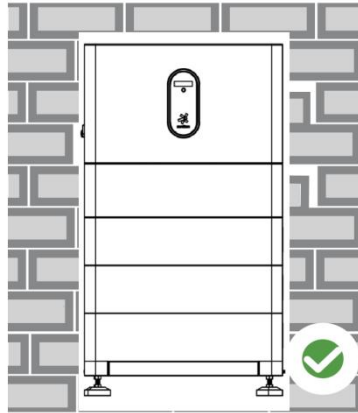
- Due to operational noise, it is not recommended to install the inverter in living areas.

5.2.2 Carrier Requirements

The mounting structure for the inverter must adhere to local/national standards and guidelines. The installation surface should be sufficiently sturdy to support four times the weight of the inverter and be suitable for its dimensions (e.g., cement walls, plasterboard walls, etc.).

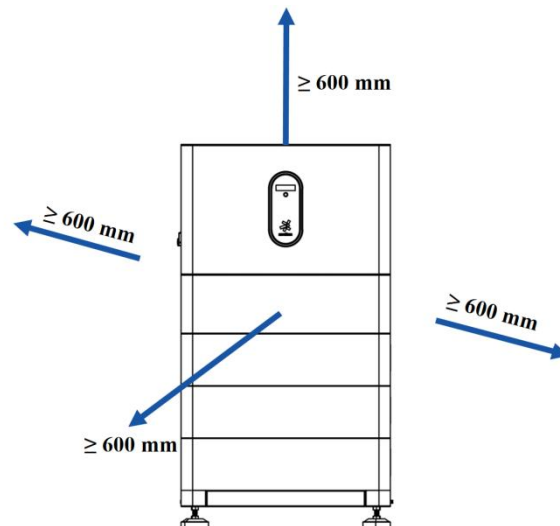
5.2.3 Angle Requirements

The inverter should be installed in a vertical position. It should never be installed horizontally, tilted forward or backward, or upside down.



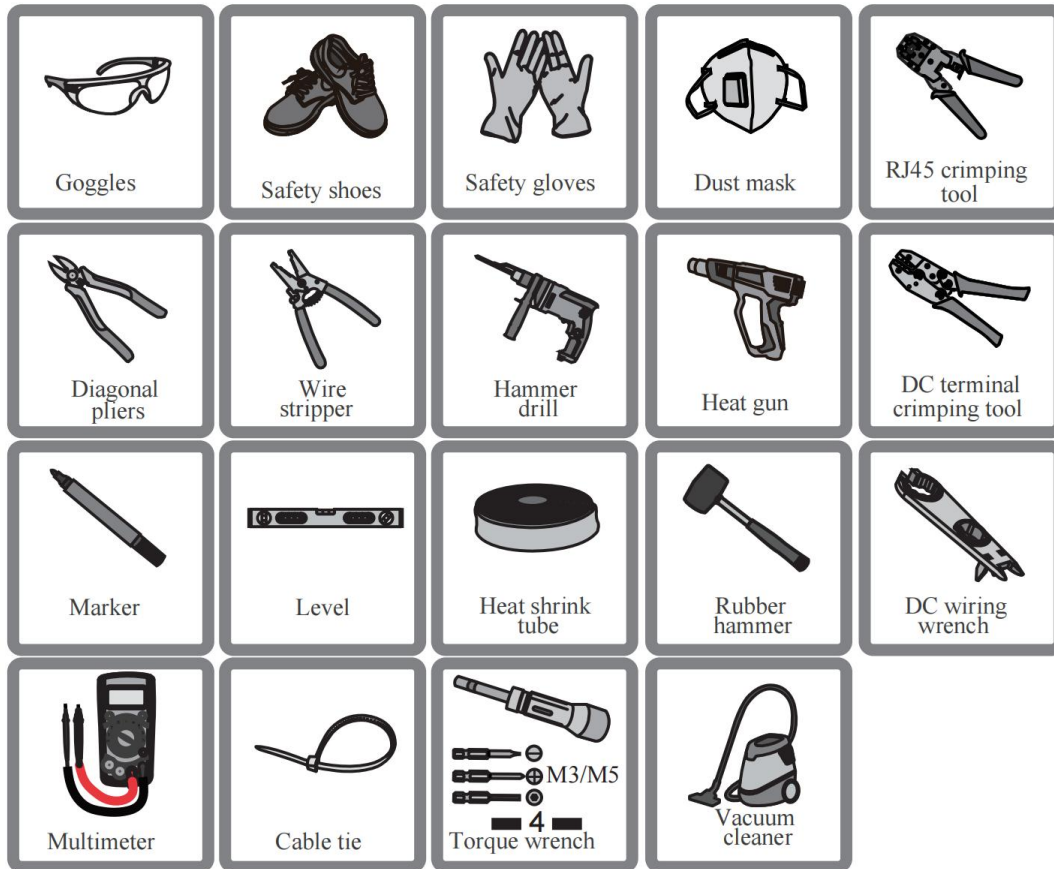
5.2.4 Clearance Requirements

Allow ample clearance around the inverter to ensure proper heat dissipation. Install the inverter at a suitable height for convenient viewing of the LED indicator and easy access to the operating switch(es).



5.3 Installation Tools

Installation tools include but are not limited to the following recommended ones. If necessary, use other auxiliary tools on site



5.4 Moving the Inverter

When transferring the inverter to the installation location, please adhere to the subsequent guidelines:

- Maintain constant awareness of the inverter's weight.
- Employ the handles situated on both sides of the inverter to lift it.
- Mobilize the inverter with the assistance of one or two individuals or with the aid of an appropriate transportation device.
- Ensure that the equipment is securely fastened before releasing it.

CAUTION

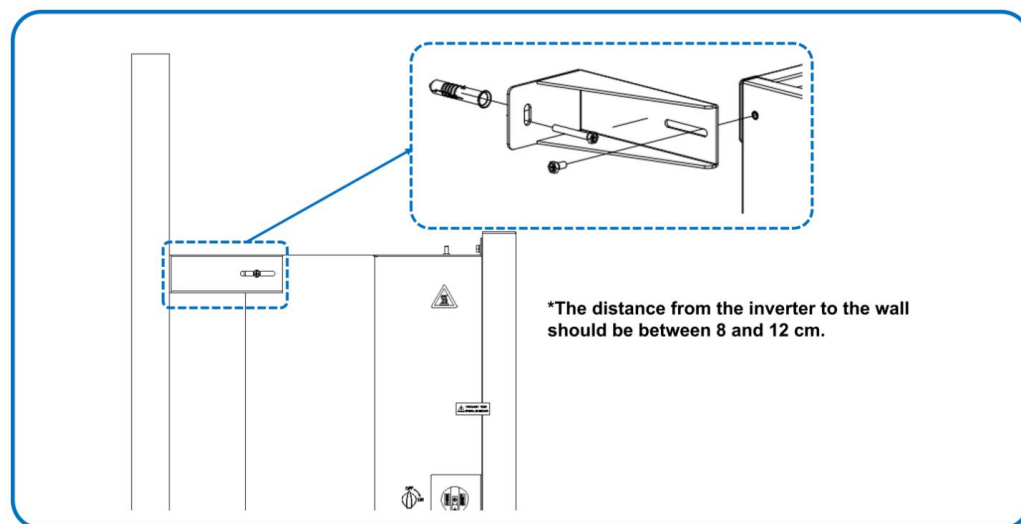
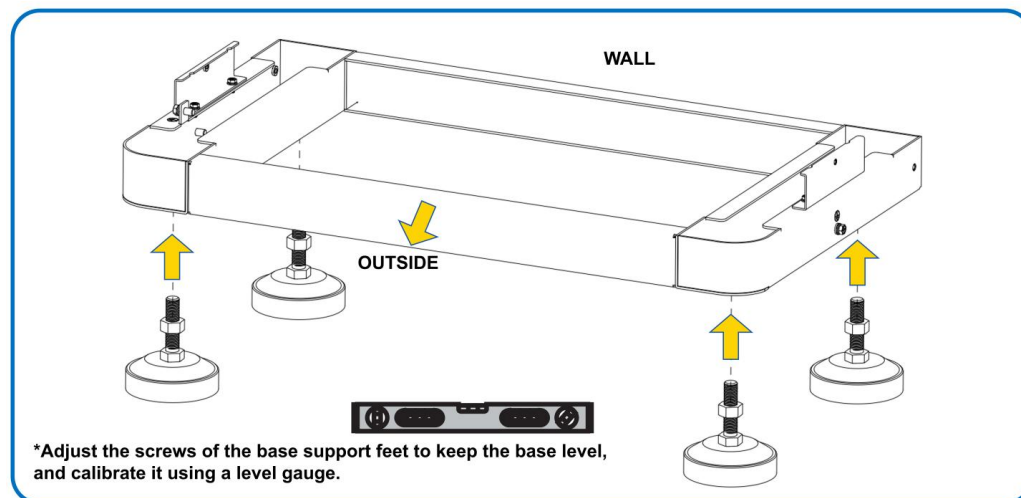
Please exercise caution to prevent personal injuries while handling the inverter. Adhere to the following guidelines:

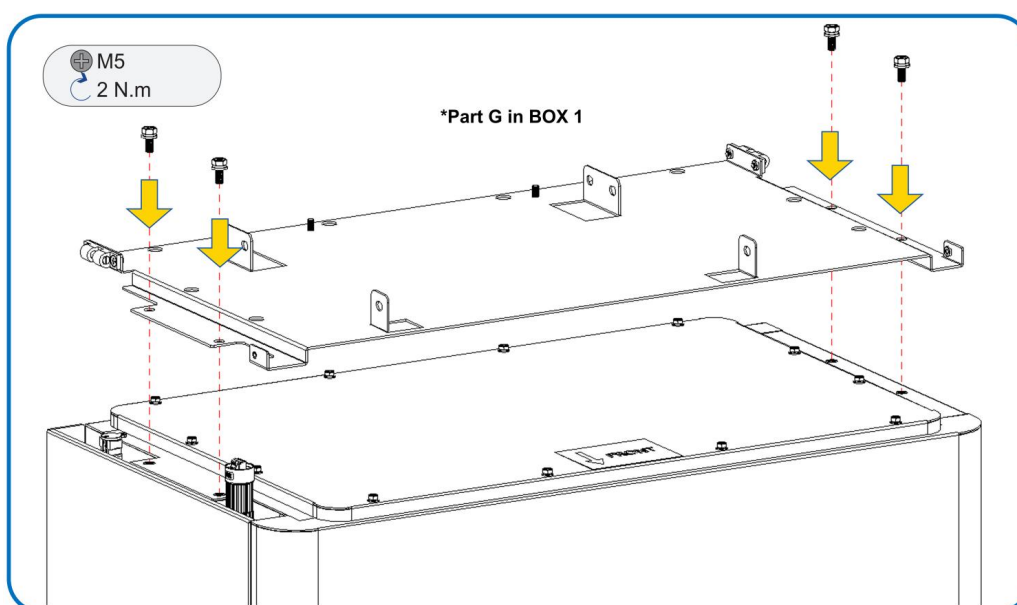
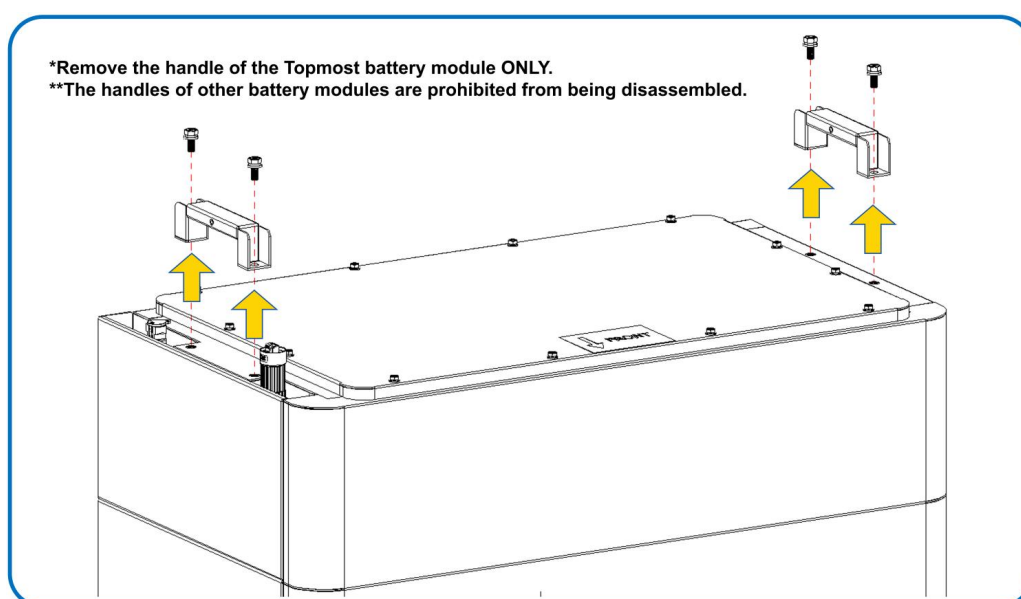
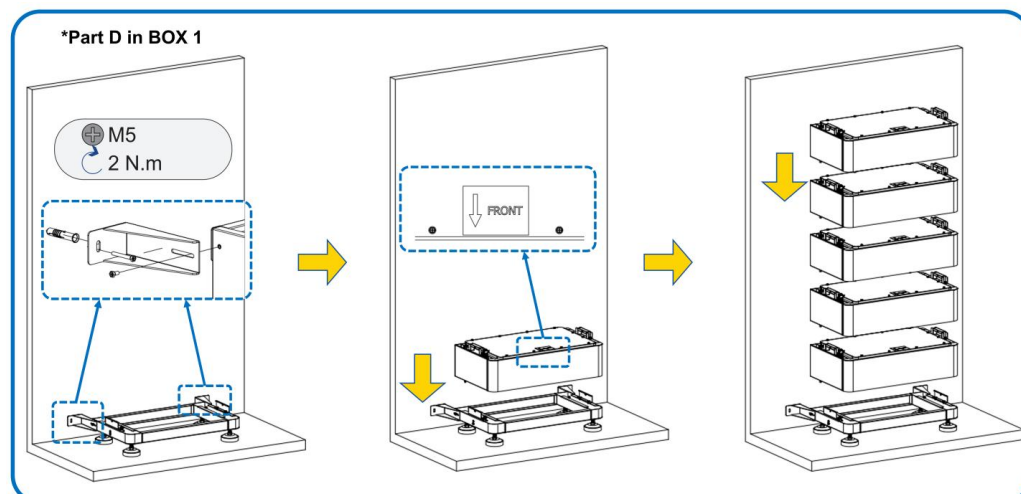
- Ensure an adequate number of personnel are assigned to carry the inverter based on its weight, and installation personnel should wear appropriate protective gear like impact-resistant shoes and gloves.
- Take note of the inverter's center of gravity to prevent tilting during handling.
- Avoid placing the inverter directly on a hard surface, as it may damage the metal enclosure. Instead, use protective materials such as a sponge pad or foam cushion underneath the inverter.
- When moving the inverter, hold it by the designated handles and avoid gripping the terminals for transportation.

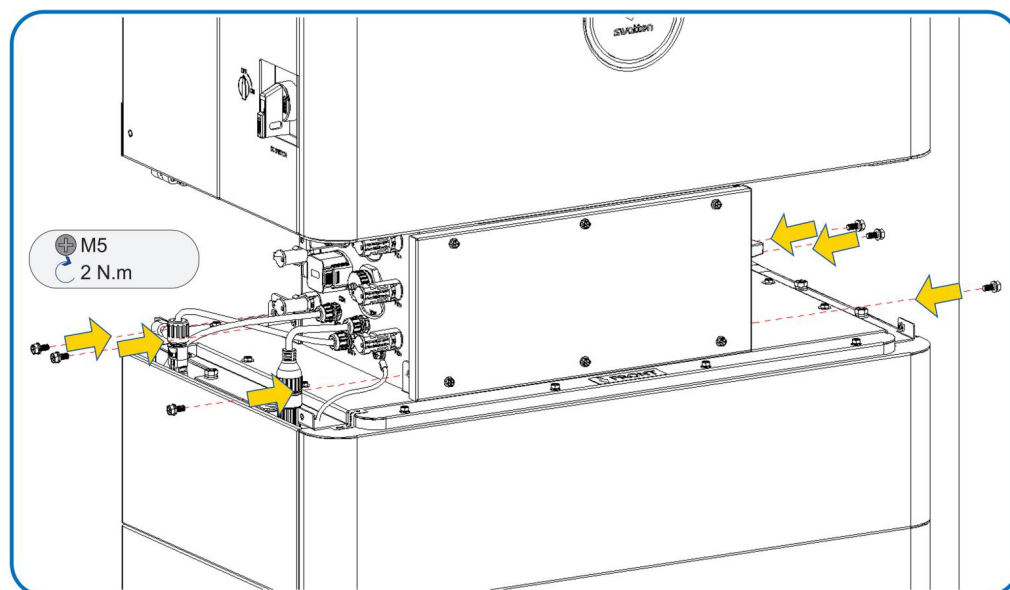
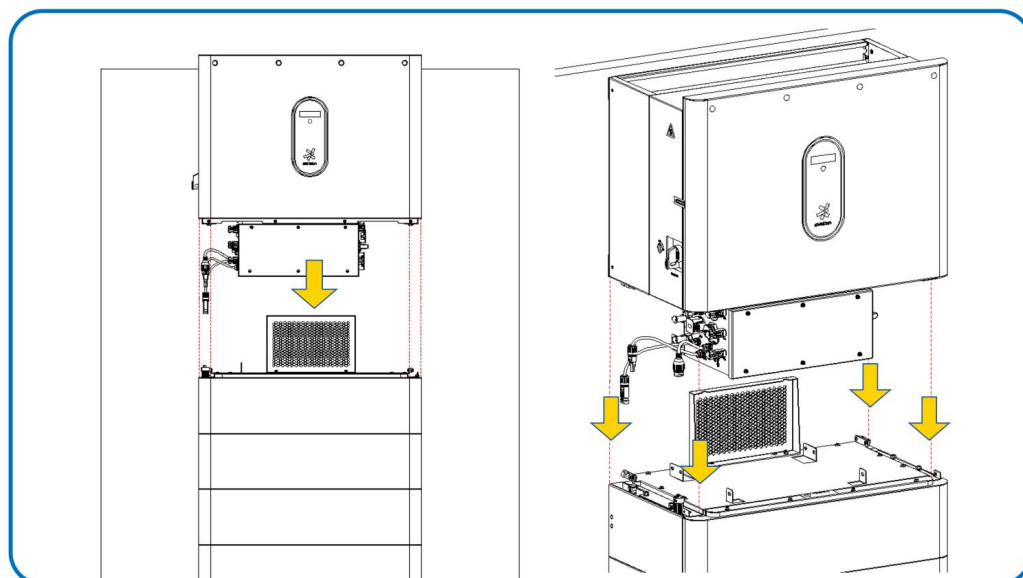
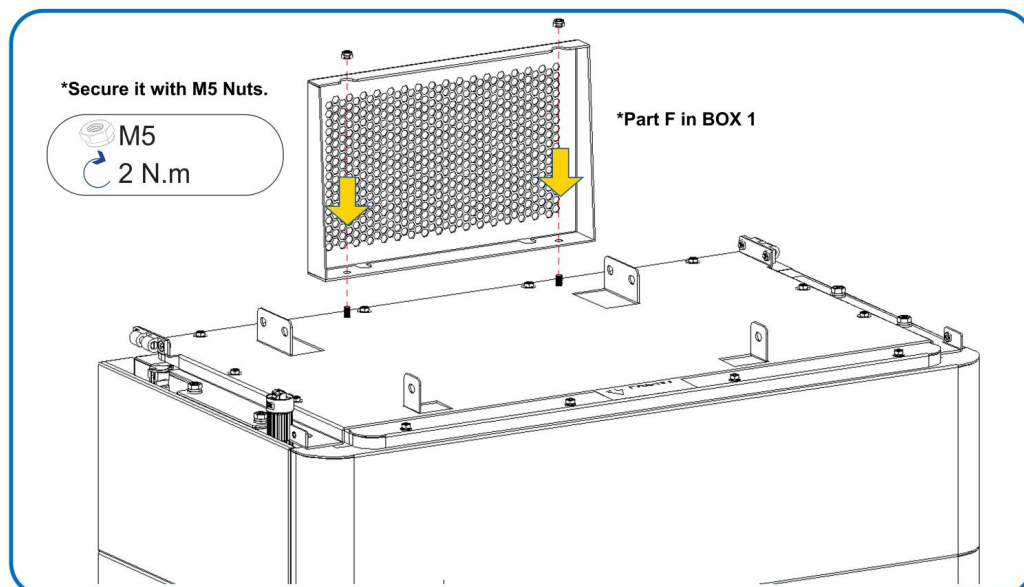
NOTICE

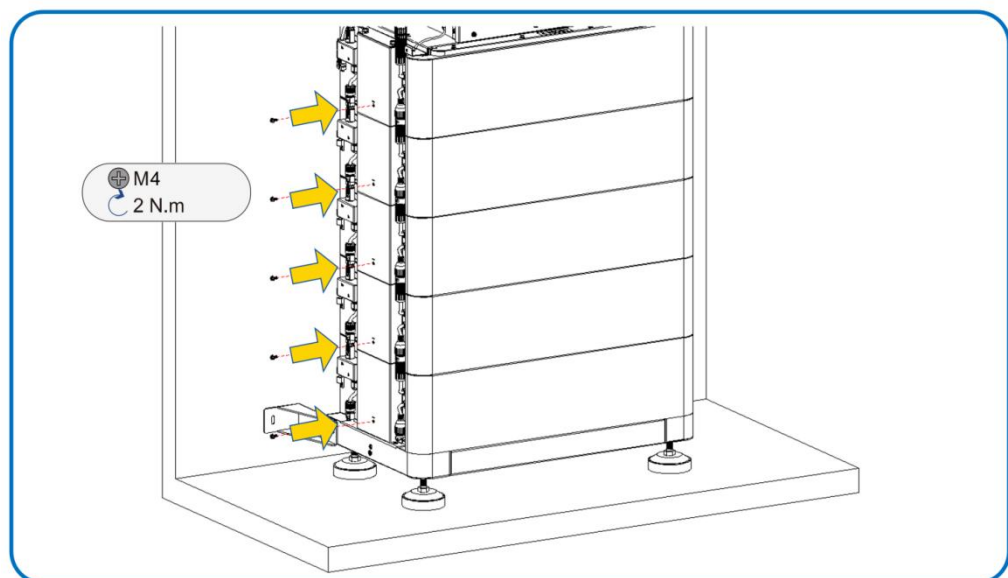
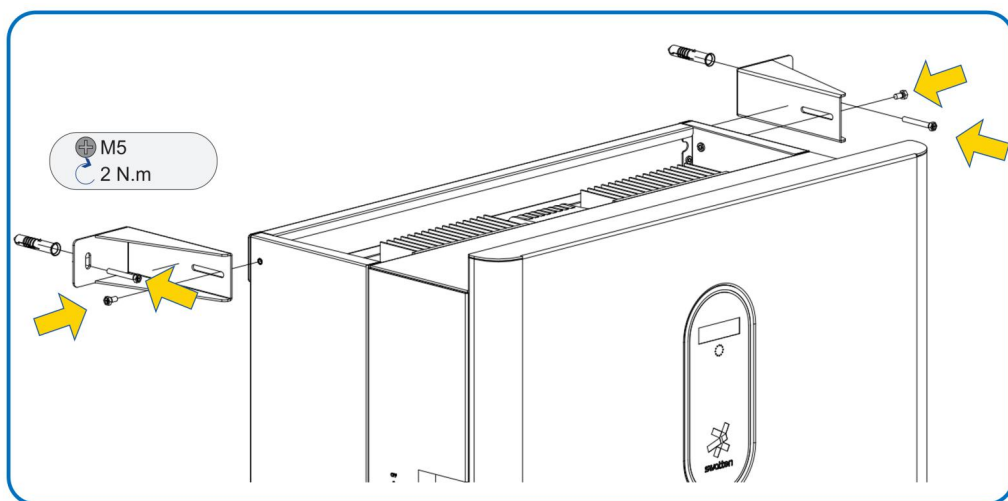
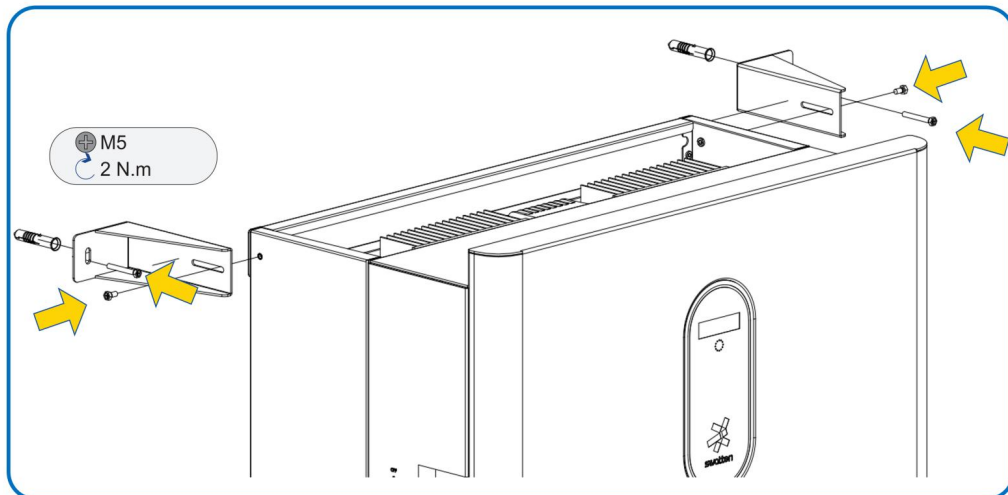
- Make sure the base is positioned vertically on the floor.
- Ensure that the base is securely attached to the wall with the arrow pointing outward.
- Ensure that all batteries are securely attached to the wall with the arrow pointing outward.
- When placing the upper battery module, align the holes of the upper and lower battery modules.
- Ensure that the locking bracket is securely attached to the wall.
- Do not install both locking brackets on one side; they should be installed on opposite sides for proper stability.

5.5 Stack and Secure









6 Electrical Connection

6.1 Safety Instructions

DANGER

The PV string produces extremely high voltage when exposed to sunlight, which can be lethal.

Operators must wear appropriate personal protective equipment during electrical connections.

Before touching any DC cables, ensure that they are voltage-free using a measuring instrument.

Follow all safety instructions provided in the relevant documents regarding PV strings.

DANGER

- Prior to electrical connections, ensure that the inverter switch and all switches connected to the inverter are set to the "OFF" position to avoid the risk of electric shock.
- Verify that the inverter is undamaged and all cables are voltage-free before performing any electrical work.
- Do not close the AC circuit breaker until the electrical connection is complete.

WARNING

Product damage resulting from incorrect wiring is not covered by the warranty.

- Electrical connections should only be carried out by professionals.
- Operators must wear proper personal protective equipment during electrical connections.
- All cables used in the PV generation system must be securely attached, adequately insulated, and correctly sized.

NOTICE

All electrical connections must adhere to local and national/regional electrical standards.

- Cables used by the user must comply with the requirements of local laws and regulations.
- Connection of the inverter to the grid requires permission from the national/regional grid department.

NOTICE

- All unused terminals must be covered with waterproof covers to maintain the protection rating.
- After completing the wiring, seal the cable inlet and outlet holes with fireproof/waterproof materials such as fireproof mud to prevent the entry of foreign matter or moisture, which may affect the long-term operation of the inverter.
- Adhere to the safety instructions related to PV strings and the regulations concerning the utility grid.

Note:

The cable colors shown in the figures in this manual are for reference only. Select cables according to the local cable standards.

6.2 Terminal Description

Inverter

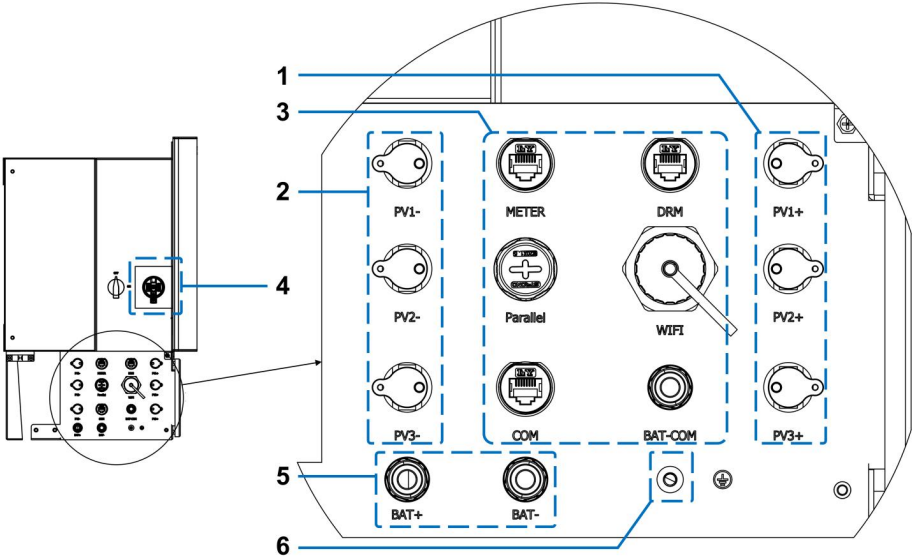
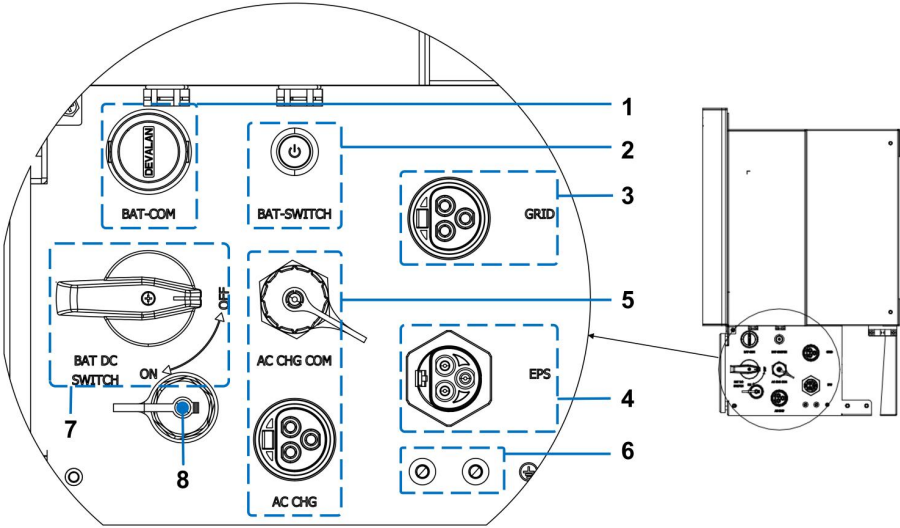


figure 6-1 Terminals

All electrical terminals on the inverter are positioned at the bottom.

It's important to note that the image provided is for reference purposes only and the actual product received may vary in appearance.

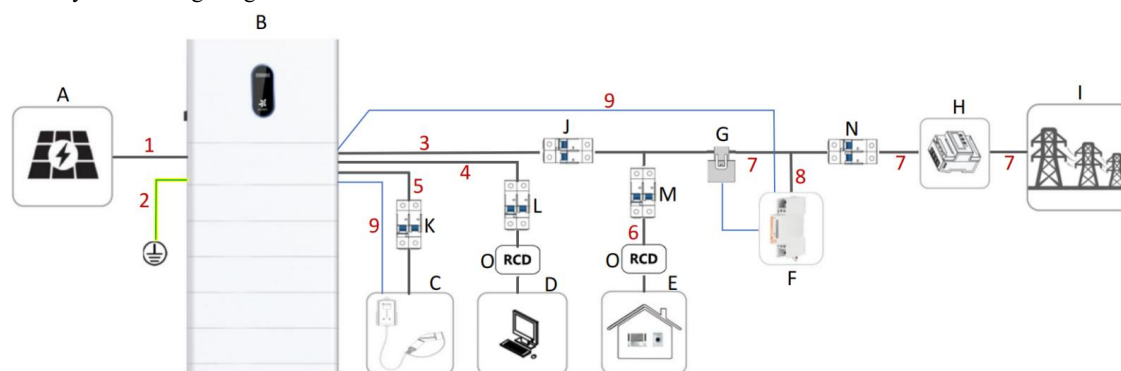
| No. | Name | Description |
|-----|----------------|--|
| 1 | PV1+,PV2+,PV3+ | PV positive terminals. |
| 2 | PV1-,PV2-,PV3- | PV negative terminals. |
| 3 | METER | Swatten smart meter communication port. |
| | DRM | Communication port for DRM. |
| | Parallel | Reserved. |
| | WIFI | Communication port for WIFI module. |
| | COM | Reserved. |
| | BAT-COM | Communication port between Inverter and Battery Module. |
| 4 | PV Switch | Switch for PV on or off. |
| 5 | BAT+ | Battery positive terminal between Inverter and Battery Module. |
| | BAT- | Battery negative terminal between Inverter and Battery Module. |
| 6 | Grounding | Grounding terminal |

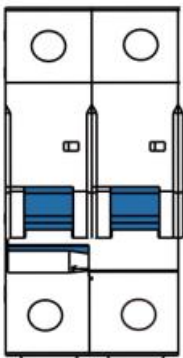


| No. | Name | Description |
|-----|---------------|---|
| 1 | BAT-COM | Reserved. |
| 2 | BAT-SWITCH | BMS power and alarm indicator. |
| 3 | GRID | Grid terminal. |
| 4 | EPS | Backup load terminal. |
| 5 | AC CHG COM | AC charger communication port. |
| | AC CHG | 1Phase AC charger power terminal. |
| 6 | PE | Grounding terminal. |
| 7 | BAT DC SWITCH | Switch for battery's input and output. |
| 8 | REBOOT BUTTON | Press with tools such as a screwdriver to restart the BAT DC SWITCH. |

6.3 Electrical Connection Overview

System Wiring Diagram



| No. | Description | Reference |
|-----|---|--|
| A | PV strings. | |
| B | All in one sys. (Inverter) | |
| C | AC charger. | |
| D | EPS loads, or named backup loads. | |
| E | NORMAL loads. | |
| F | Smart energy meter. | |
| G | Current Transformer (1 CT) of the smart energy meter. | |
| H | Main meter. | |
| I | Grid | |
| J | AC breaker of inverter GRID terminal. |  <p>32A-63A for 5kW, 40A-63A for 6kW. Depending on Maximum EPS loads and Maximum Taking Power setting in APP. Recommend 63A for 7-13kW Maximum Taking Power</p> |
| K | AC breaker of AC charger. | 40A-63A |
| L | AC breaker of EPS loads. | <p>32A for 5kW, 40A for 6kW. Depending on Maximum EPS loads.</p> |

| | | |
|---|-----------------------------|--|
| M | AC breaker of NORMAL loads. | ≤63A. Depending on the NORMAL loads. |
| N | AC breaker of Grid. | 32A-63A for 5kW, 40A-63A for 6kW. Depending on Maximum loads(EPS+NORMAL) and Maximum Taking Power setting in APP. Recommend 63A for all inverter models. |
| O | RCD | 30mA, or refer to local regulation. |

Note:

1. NORMAL loads include generators, such as another inverter.
2. All the AC breaker and RCD must Comply with local regulation.

In case local regulations impose specific requirements for cables, follow the cable specifications mandated by those regulations.

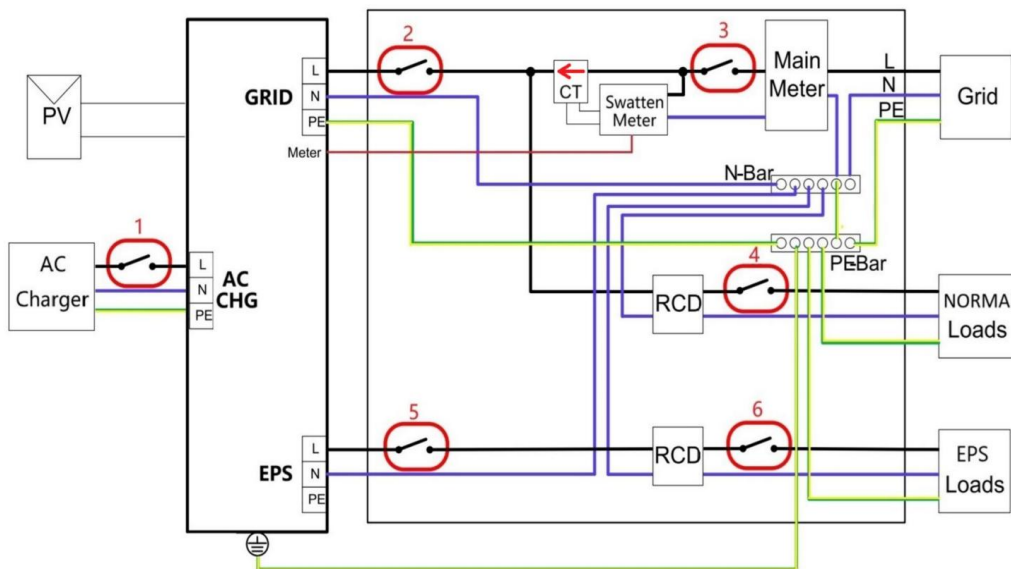
Cable selection should take into consideration factors such as rated current, cable type, routing method, ambient temperature, and maximum expected line loss.

The distance for cabling between the battery and the inverter should not exceed 10 meters, and it is recommended to keep it within 5 meters for optimal performance.

6.4 EPS Wiring Diagram

For AU/NZ/SA

For Australia and New Zealand and South Africa, the neutral cable of GRID side and EPS side must be connected together. Otherwise EPS function will not work.

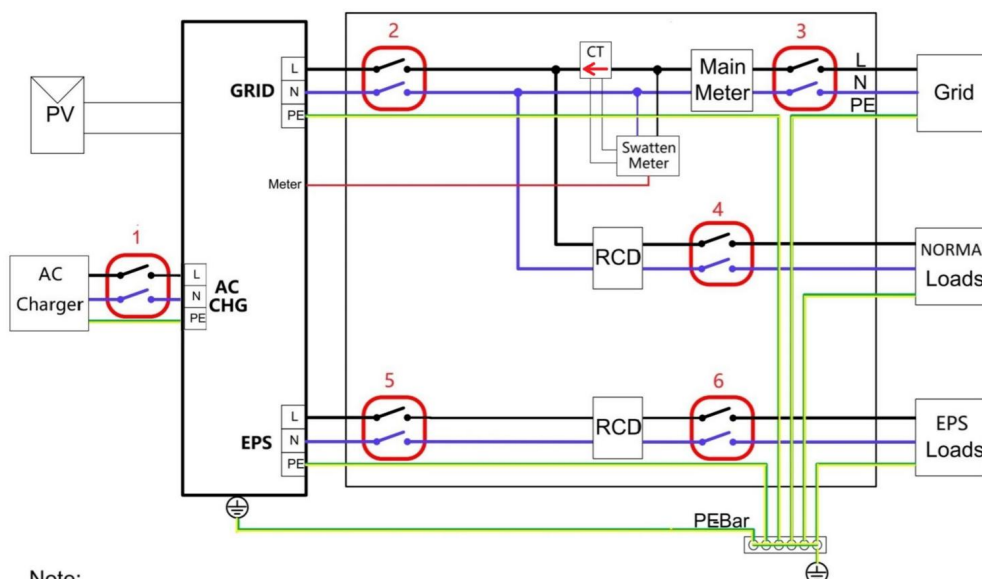
**Note:**

1. The PE wire of EPS terminal is not required for Australia, New Zealand and South Africa.
2. 1-6: AC breaker, refer to Electrical Connection Overview.
3. All the AC breakers and RCD must comply with local regulation.
4. As shown in the above figure, the arrow on the CT must point to the load side.

For other countries

For other countries with grid systems that do not have specific requirements for wiring connections, the

following diagram serves as an example:



Note:

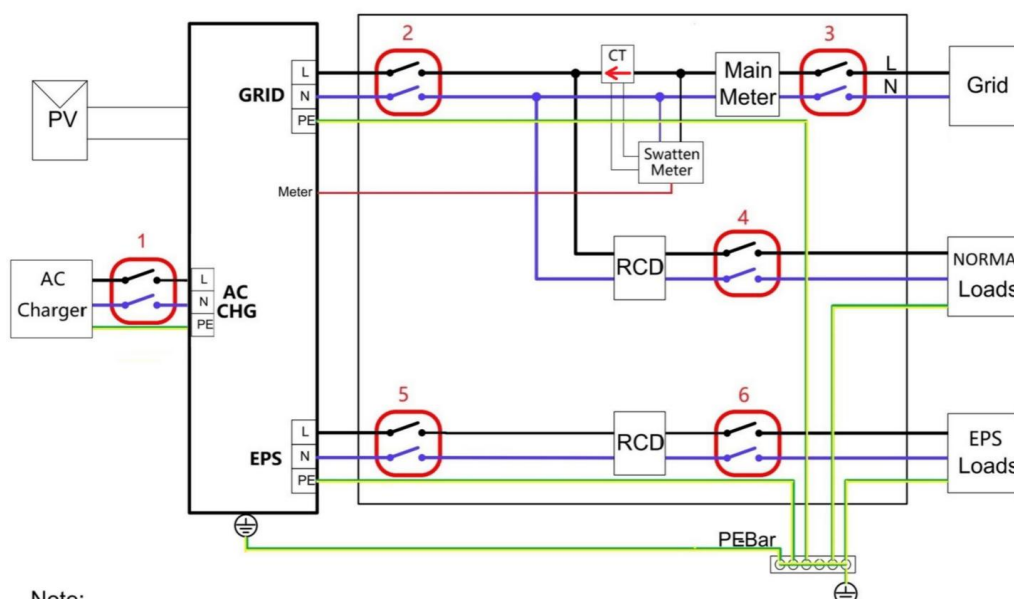
Please note that this diagram is provided as an example and may need to be adjusted based on the specific regulations and standards of the country in which the installation is taking place. It is important to consult local regulations and guidelines to ensure compliance and safety.

Note:

- 1-6: AC breaker, refer to Electrical Connection Overview.
2. All the AC breakers and RCD must comply with local regulation.
3. As shown in the above figure, the arrow on the CT must point to the load side.

For TT system

In the TT system, : The diagram provided is an example for grid systems in the TT system. Please ensure compliance with local regulations and guidelines for wiring connections in your specific location.



Note:

Note:

- 1-6: AC breaker, refer to Electrical Connection Overview.
2. All the AC breakers and RCD must comply with local regulation.

3. As shown in the above figure, the arrow on the CT must point to the load side.

NOTICE

1. The contents may be updated or revised periodically due to product development. The information within this guide is subject to change without prior notification. In no circumstances can this guide replace the user manual or associated notes of the device.
2. Before installing the equipment, ensure that you carefully read, thoroughly understand, and strictly abide by the detailed instructions in the user manual and other relevant regulations. The user manual can be downloaded by accessing the website at www.swatten.com, or it can be acquired by scanning the QR code on the back cover of this guide.
3. All operations must be carried out solely by qualified personnel. These personnel must have received training in the installation and commissioning of electrical systems, be capable of handling potential hazards, and possess knowledge of the manual as well as local regulations and directives.
4. Before commencing installation, check that the items in the package are intact and complete in comparison with the packing list. In case of any damaged or missing components, contact Swatten or the distributor immediately.
5. The cable used must be in good condition and well insulated. Operating personnel must wear appropriate personal protective equipment (PPE) at all times.
6. Any violation may lead to personal injury, death, or damage to the device, and will invalidate the warranty.

Safety

The inverter has been designed and tested in strict accordance with international safety regulations. Read all safety instructions attentively before starting any work and adhere to them constantly when working on or with the inverter. Incorrect operation or work may cause:

- Injury or death to the operator or a third party;
- Damage to the inverter or other properties.

Please comply with the safety instructions related to the PV strings and the utility grid.

6.5 External Protective Grounding Connection

DANGER

Electric shock!

- Ensure a reliable connection of the ground cable to prevent electric shock.

WARNING

- The inverter does not have a transformer, so neither the negative nor positive electrode of the PV string can be grounded. Grounding these electrodes will result in abnormal operation of the inverter.
- Connect the grounding terminal to the external protective grounding point before connecting the AC cable, PV string, and communication cable.

WARNING

The external protective grounding terminal should meet at least one of the following requirements:

- The grounding cable should have a cross-sectional area of not less than 10mm² for copper wire or 16mm² for aluminum wire. It is recommended to have reliable grounding for both the external protective grounding terminal and the AC side grounding terminal.
- If the grounding cable has a cross-sectional area less than 10mm² for copper wire or 16mm² for

aluminum wire, ensure reliable grounding for both the external protective grounding terminal and the AC side grounding terminal.

Grounding connections can be made using other methods that comply with local standards and regulations. Sieyuan shall not be held liable for any consequences arising from these connections.

6.5.1 External Protective Grounding Requirements

All non-current carrying metal parts and device enclosures in the PV power system should be grounded, such as PV module brackets and inverter enclosures.

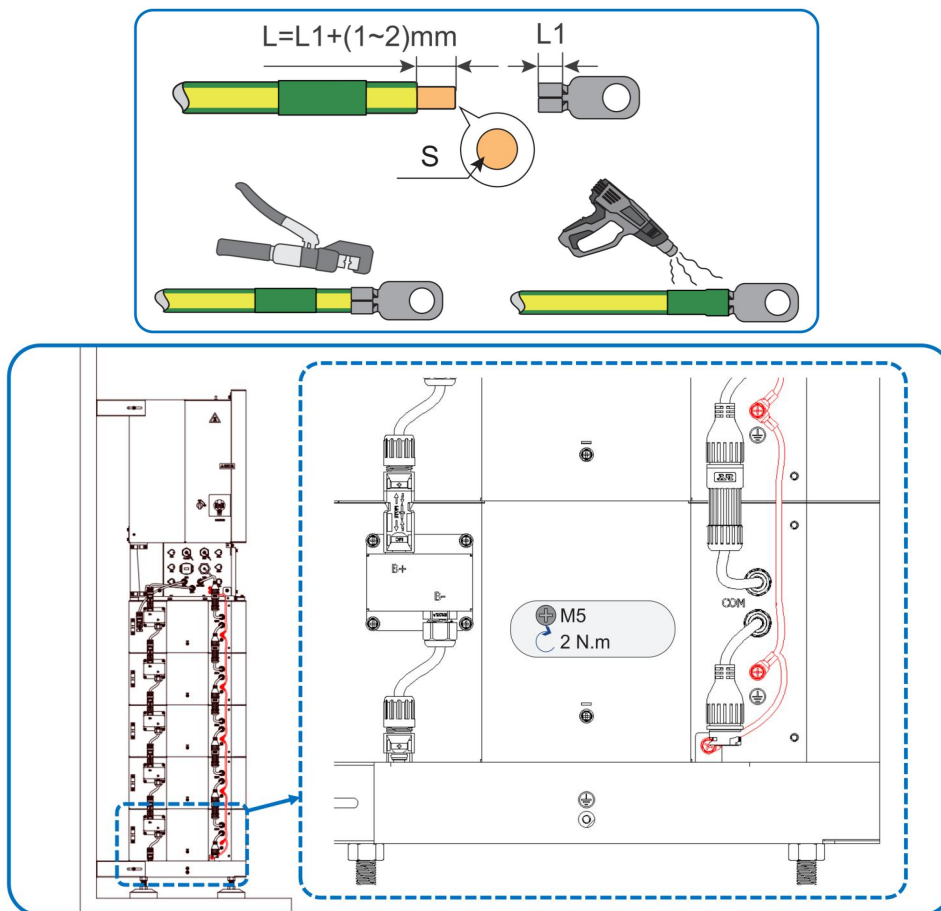
If there is only one inverter in the PV system, connect the external protective grounding cable to a nearby grounding point.

If there are multiple inverters in the PV system, connect the grounding points of all inverters and the PV array frames to an equipotential cable (according to the site conditions) to establish an equipotential connection.

6.5.2 Connection Procedure

There are two additional grounding terminals available on the bottom and right side of the inverter. You can connect the grounding cable to either one of them. Please note that the external grounding cable needs to be prepared by the customers.

Step 1: Prepare the cable and OT/DT terminal.



6.6 AC Cable Connection

6.6.1 AC Side Requirements

Only with the permission of the local grid department, the inverter can be connected to the grid. Before connecting the inverter to the grid, it is important to ensure that the grid voltage and frequency meet the requirements specified in the "Technical Data" section. If there are any discrepancies, it is recommended to contact the electric power company for assistance.

An independent circuit breaker must be installed on the output side of the inverter. This circuit breaker ensures safe disconnection from the grid when needed. It is crucial for maintaining the safety of the system.

WARNING

To ensure safe disconnection from the grid, AC circuit breakers should be installed on both the output side of the inverter and the grid side.

- Assess the need for an AC circuit breaker with a higher overcurrent capacity based on the specific conditions of the installation.
- Do not connect any local load between the inverter and the AC circuit breaker.
- Each inverter should have its own dedicated AC circuit breaker; multiple inverters cannot share a single AC circuit breaker..

Residual Current Monitoring Device

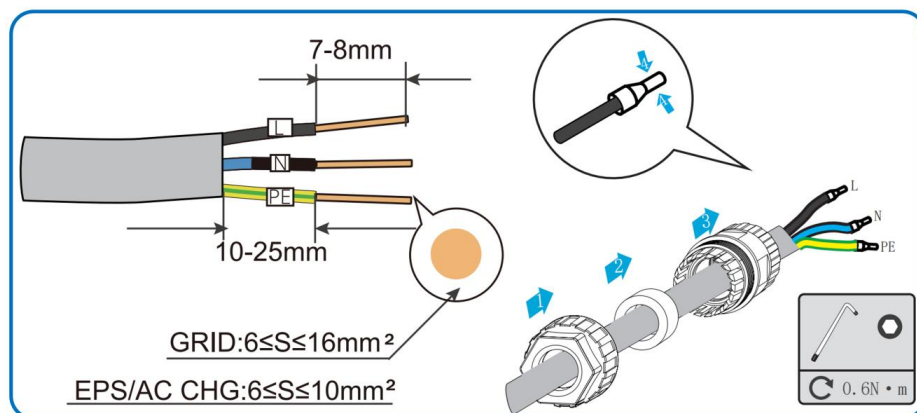
With an integrated universal current-sensitive residual current monitoring unit included, the inverter will disconnect immediately from the mains power once a fault current with a value exceeding the limit is detected.

However if an external residual current device (RCD) (type A is recommended) is mandatory, the switch must be triggered at a residual current of 300 mA (recommended). RCD of other specifications can also be used according to local standard.

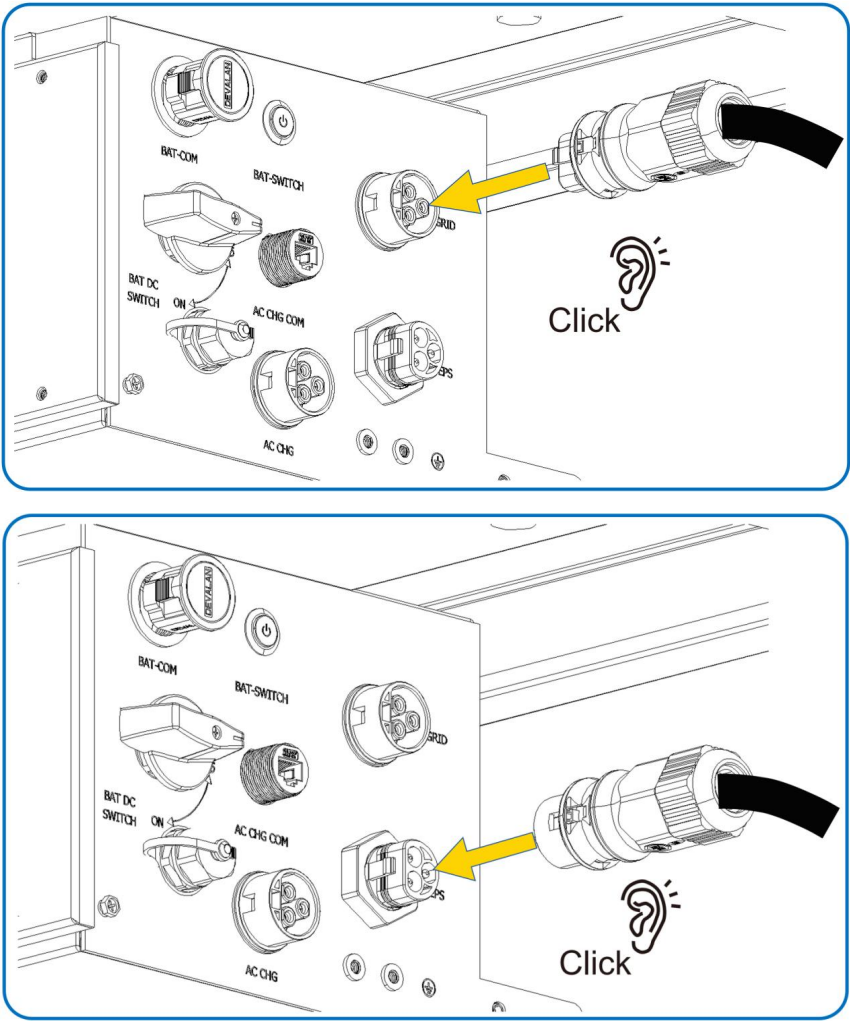
6.6.2 Connecting the AC Cable (EPS and GRID Cable)

Disconnect the AC circuit breaker and secure it against reconnection.

step 1: Strip 10-25 mm of the cable jacket and 7-8 mm (L1) of the wire insulation.



Step 2: Connect to the connector, and insert it into the inverter's GRID terminal and EPS terminal respectively.



6.7 Smart Meter Connection

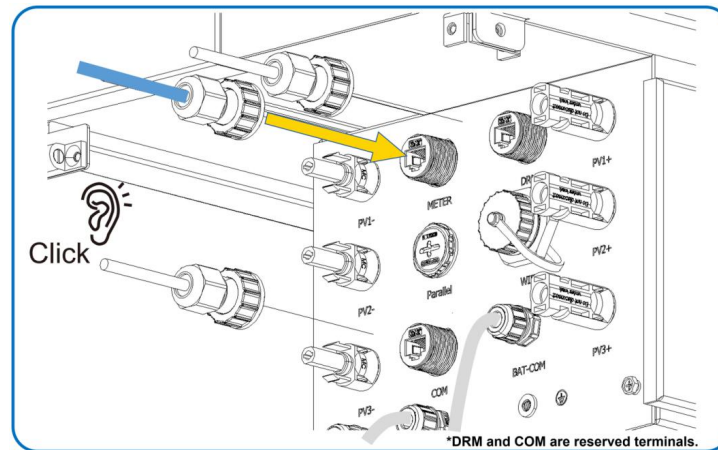
WARNING

The L' and N' wires from the Sieyuan Energy meter must be connected to the GRID port in a one-to-one correspondence. Failure to adhere to this wiring arrangement may result in improper functioning or permanent damage to the machine. Sieyuan holds no responsibility for any damage caused to the machine due to this wiring error!!!

Φ4.8 - 6mm

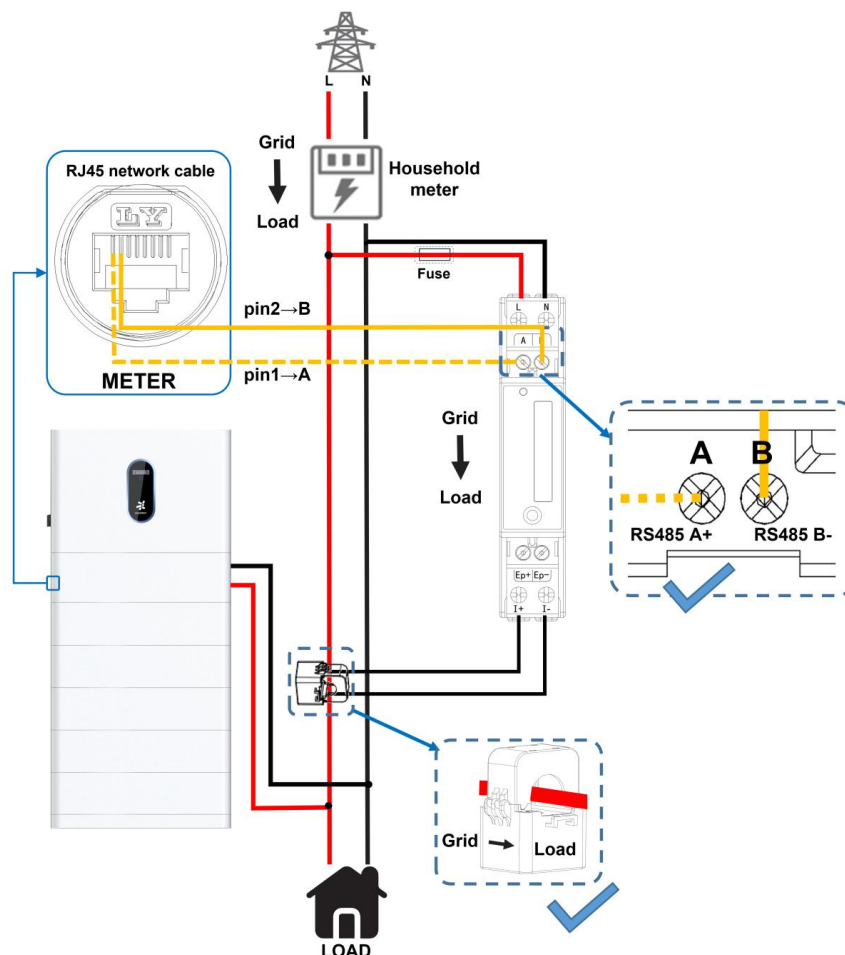
| METER | | | |
|---------------|---------------|----|----|
| 01 | 02 | 03 | 04 |
| METER_RS485_A | METER_RS485_B | NC | NC |
| 05 | 06 | 07 | 08 |
| NC | NC | NC | NC |

METER



Step 1: Turn off the PV panel switch, the load switch, the battery switch and other power switches, and ensure that they cannot be reconnected.

Step 2: Connect pin 1 and pin 2 of the inverter's METER port to terminal A and terminal B on the Smart Meter.



Step 3: Connect each wire to the terminals on the Smart Meter.

Step 4: After the meter is connected, it is necessary to carefully inspect the CT direction and cable installation. The arrow on the CT MUST always point to the LOAD side.

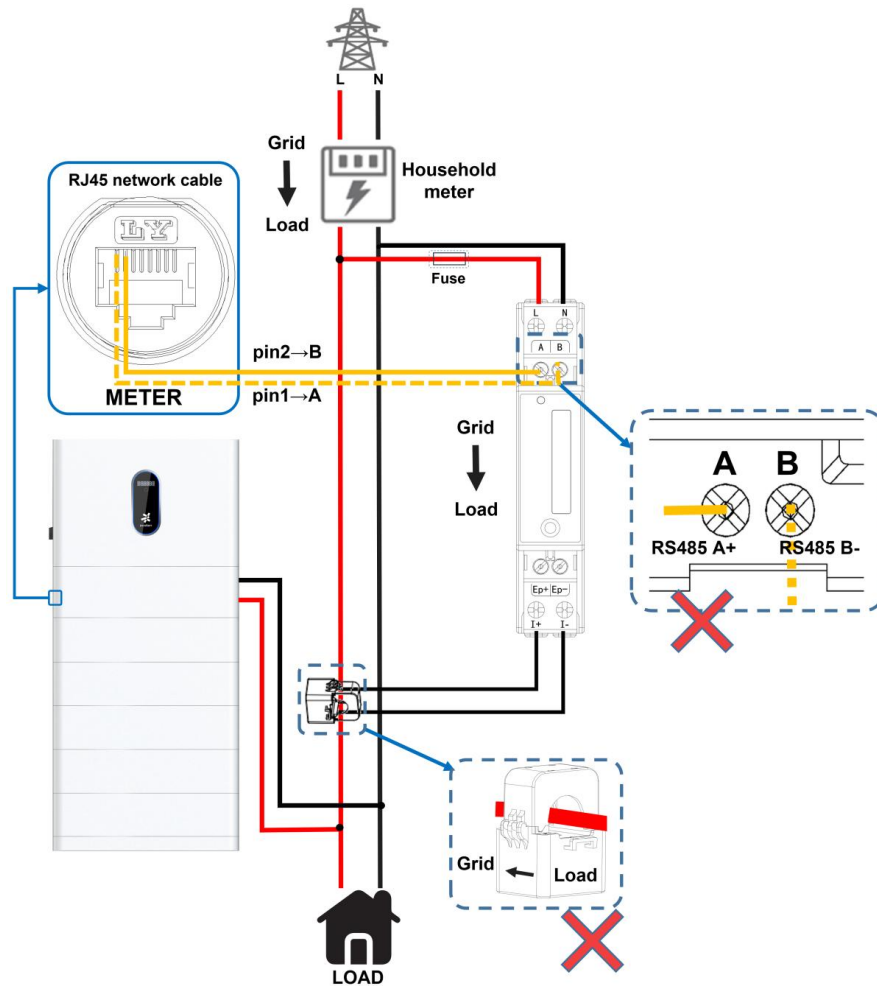
After the meter is connected, it is necessary to check the following items:

1. The arrow on the CT should be directed towards the LOAD side.
2. Ensure that the clips are perfectly engaged without any deviation. Otherwise, the measurement of current

may not be accurate.



Carefully check whether the wiring sequence of the Smart Meters and CTs are correct.



6.8 PV Cable Connection

DANGER

The PV string produces dangerous high voltage when exposed to sunlight.

- Adhere to all safety instructions provided in the relevant documents regarding PV strings.

WARNING

- Make sure the PV array is well insulated to ground before connecting it to the inverter.
- Make sure the maximum DC voltage and the maximum short circuit current of any string never exceed inverter permitted values specified in "Technical Data".
- Check the positive and negative polarity of the PV strings, and connect the PV connectors to corresponding terminals only after ensuring polarity correctness.
- During the installation and operation of the inverter, please ensure that the positive or negative electrodes of PV strings do not short-circuit to the ground. Otherwise, an AC or DC short-circuit may occur, resulting in equipment damage. The damage caused by this is not covered by the warranty.
- Electric arc or contactor over-temperature may occur if the PV connectors are not firmly in place, and Sieyuan shall not be held liable for any damage caused.
- If the DC input cables are reversely connected or the positive and negative terminals of different MPPT are shorted to ground at the same time, while the DC switch is in the "ON" position, do not operate immediately. Otherwise, the inverter may be damaged. Please turn the DC switch to "OFF" and remove the DC connector to adjust the polarity of the strings when the string current is lower than 0.5A.

NOTICE

- The following requirements about PV string connection must be met. Otherwise, it may cause irreversible damage to the inverter, which is not covered by the warranty.
- Mixed use of different brand or model of PV modules in one MPPT circuit, or PV modules of different orientation or angles in a string may not damage inverter but will cause system bad performance!
- The inverter enters standby state when the input voltage ranges between 560 V and 600 V. The inverter returns to running state once the voltage returns to the MPPT operating voltage range, namely, 40 V to 560 V.

6.8.1 PV Input Configuration

The inverters have three PV inputs, standard configuration includes PV1 and PV2, PV3 is optional.

PV1 is one MPPT, PV2&PV3 share one MPPT.

The PV strings to two DC input areas may differ from each other, including PV module type, number of PV modules in each string, angle of tilt, and installation orientation.

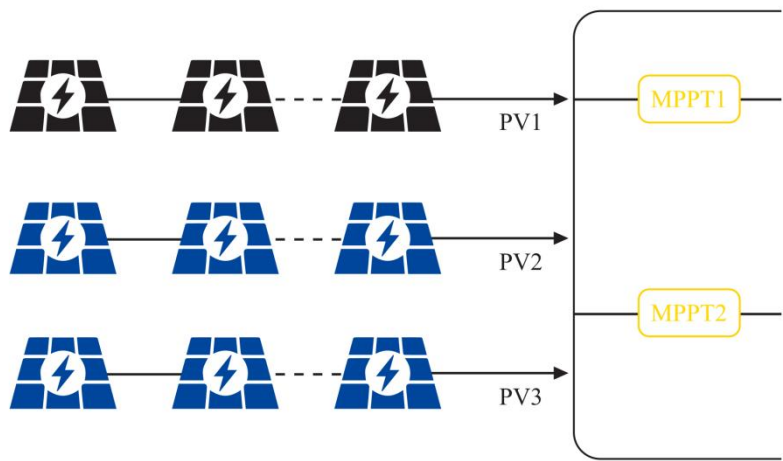


figure 6-3 PV Input Configuratinon

Before connecting the inverter to the PV inputs, it is necessary to simultaneously meet the following electrical requirements.

| NO. Model | Open circuit Voltage Limit | Max. Current for Input Connector |
|------------|----------------------------|----------------------------------|
| SiH-5kW-SH | 600V | 20A |
| SiH-6kW-SH | | |

6.8.2 Assembling and Installing the PV Connectors

DANGER

High voltage precautions:

- Prior to conducting any electrical operations, ensure that all cables are free of voltage.
- Do not connect the DC switch and AC circuit breaker until the electrical connections are completed.

To maintain IP65 protection, only use the provided connector.

NOTICE

The cross-sectional size of PV cables and battery cables is different, please refer to the table in chapter 6.3 for details.

WARNING

Use only properly insulated tools to prevent accidental electric shock or short circuits. If insulated tools are not available, cover all exposed metal surfaces of the tools, except their tips, with electrical tape.

WARNING

The plug connector should only be connected by trained electricians.

WARNING

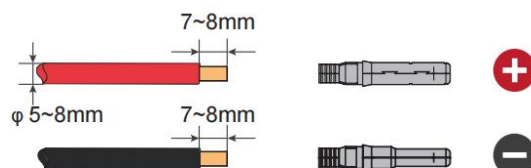
Do not disconnect the battery connectors while under load!
Ensure that the inverter is completely shut down and in a no load state before disconnecting the battery connectors.

WARNING

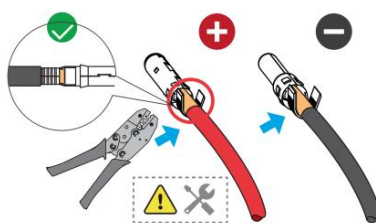
During the installation and operation of the inverter, ensure that the positive or negative polarities of the

batteries do not short-circuit to the ground. Failure to do so may result in AC or DC short circuits, leading to equipment damage. Such damage is not covered by the warranty.

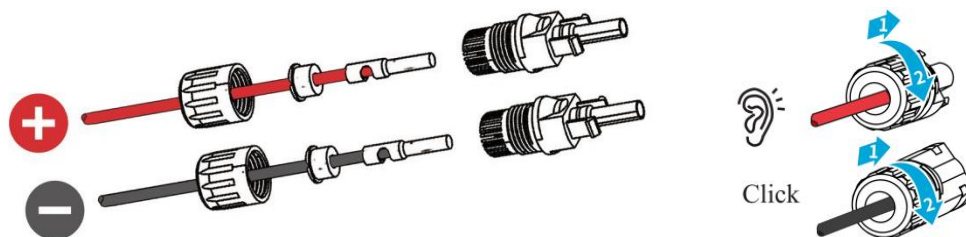
Step 1: Strip the insulation from each DC cable by approximately 7 mm to 8 mm.



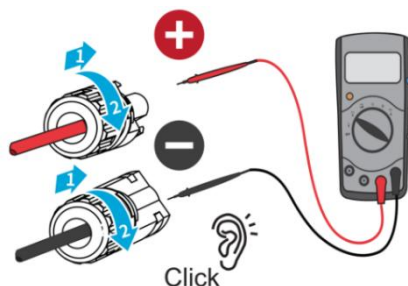
Step 2: Assembling the Crimp contact and cable, use the crimping pliers to securely assemble the cable ends.



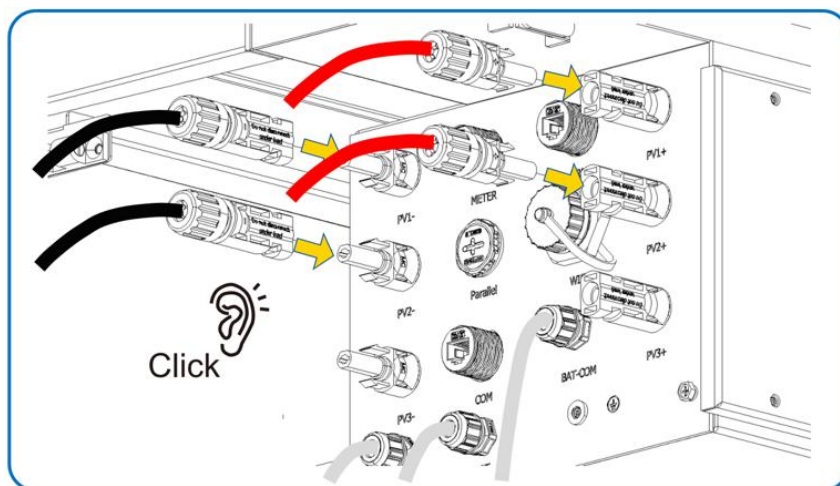
Step 3: Lead the cable through the cable gland and insert the crimp contact into the insulator until it audibly snaps into place. Pull the cable gently backward to ensure a firm connection. Tighten the cable gland and insulator using a torque of 2.5 N.m to 3 N.m.



Step 4: Verify the polarity correctness of the PV string cable and battery cable connections and ensure that the open circuit voltage does not exceed the inverter's input limit of 1,000V.



Step 5: Turn the DC switch to the "OFF" position. Connect the connectors to their respective terminals, the PV panel cable to the PV terminal until an audible click is heard.



Step 6: Repeat the previous steps to connect the PV connectors of other PV strings.

Step 7: Use a terminal cap to seal any unused PV and battery terminals.

connections and ensure that the polarity of the optimizer cables is correct.

Step 8: Verify that the connectors are firmly and securely in place.

--End

NOTICE

Reversing the polarity can result in a fault or alarm state in the inverter, causing it to operate abnormally.

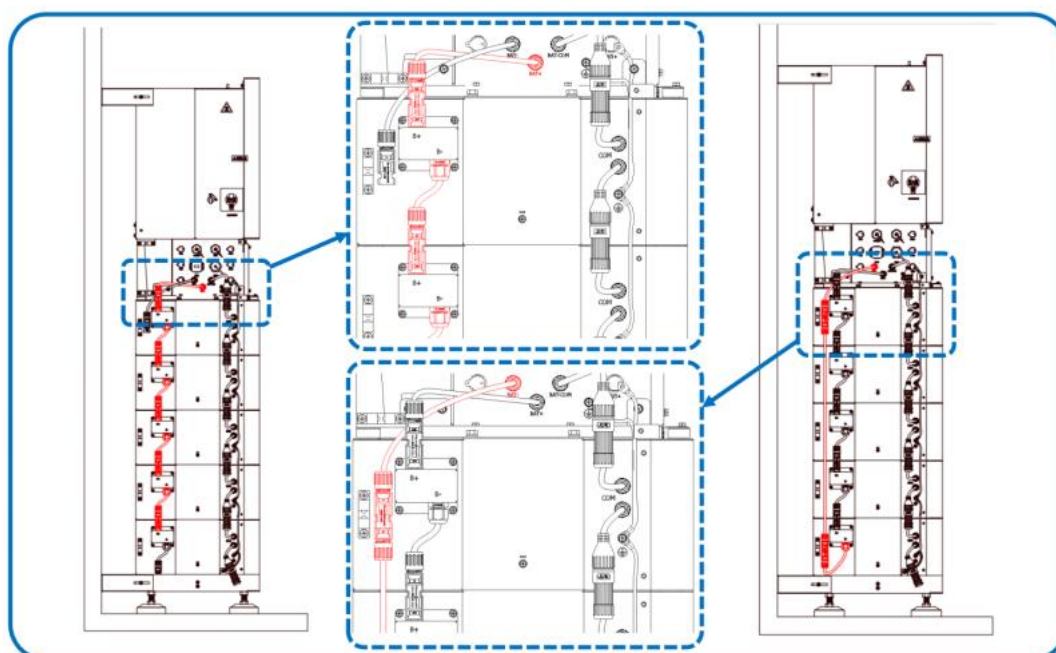
NOTICE

Only connect these connectors with other MC4 connectors. When making the connections, always adhere to the specifications for nominal voltage and nominal current. The smallest common value is acceptable.

--End

6.9 Battery cable connection

6.9.1 Battery Power Cable Connection



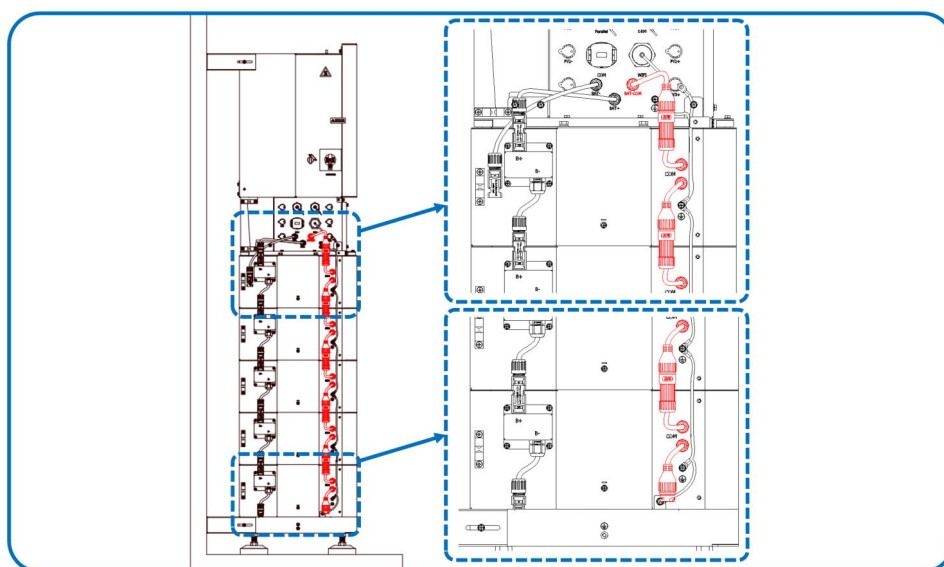
Connect the negative pole (B-) of the topmost battery module to the positive pole (B+) of the second battery module, and connect the power cables of each battery module in this order. Finally, connect the positive pole (B+) of the topmost module to the BAT+ interface of the inverter, and connect the negative pole (B-) of the bottommost module to the BAT- interface of the inverter.

WARNING

It is strictly forbidden to short-circuit the positive and negative poles of all battery modules or any single battery module; otherwise, the fuse of the battery module will be burned out.

6.9 Communication Connection

6.9.1 BAT-COM Connection



From top to bottom, connect the BAT-COM terminal of the inverter to the COM terminal of the first battery module in sequence. Then connect the COM terminal of the first battery module to the COM terminal of the second battery module, and continue this process until reaching the bottom module.

NOTICE

The COM terminal out of the bottommost battery module remains unconnected.

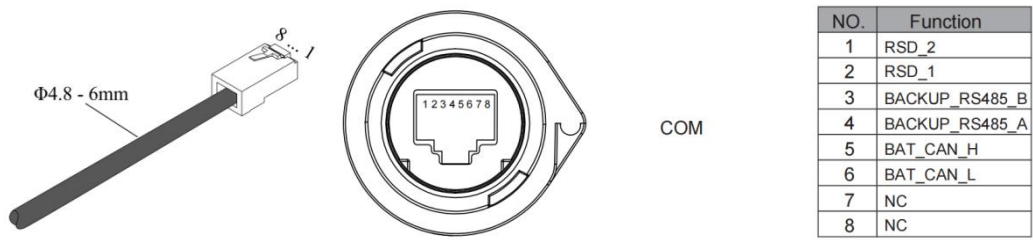
6.9.2 Sieyuan Energy Meter Communication Connection

Please refer to chapters 6.7 for details

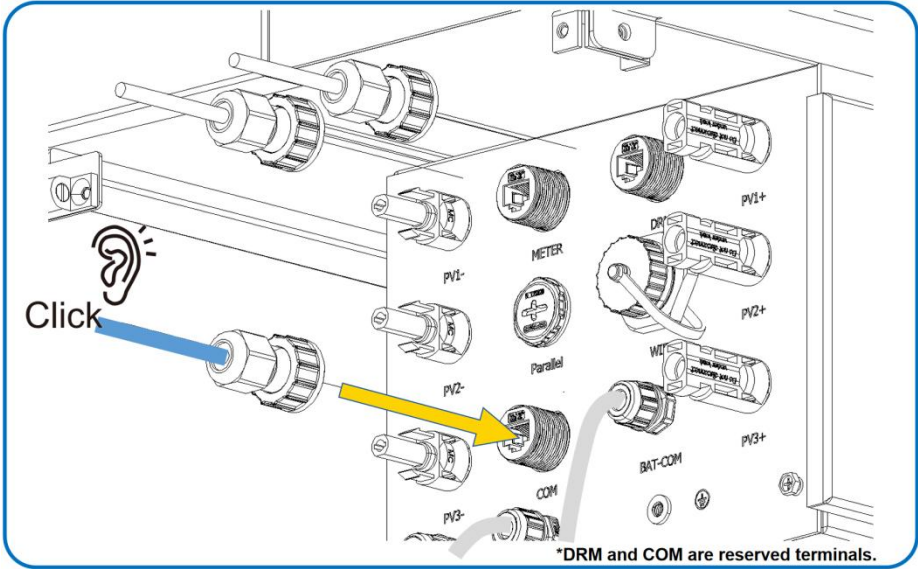
6.9.4 COM Connection

The COM port serves as the RS-485 communication interface of the inverter. It enables you to monitor the real-time status of the inverter and make adjustments to its functions.

step 1 Obtain an Ethernet cable. Refer to the provided diagram to correctly connect the network cable to the COM port as specified.



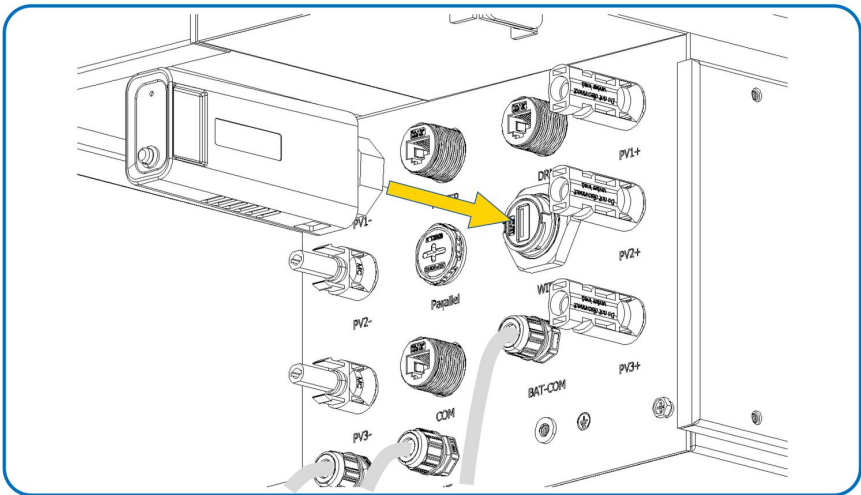
Step 2: Connect one end of the network cable to the corresponding port on the inverter.



-End

6.9.5 WiFi Logger Connection

The WiFi Logger allows the uploading of inverter's operational information to the corresponding app, enabling users to monitor the inverter's status in real-time. The following diagram illustrates the recommended connection mode for the WiFi Logger.



6.9.6 DRM-COM Connection

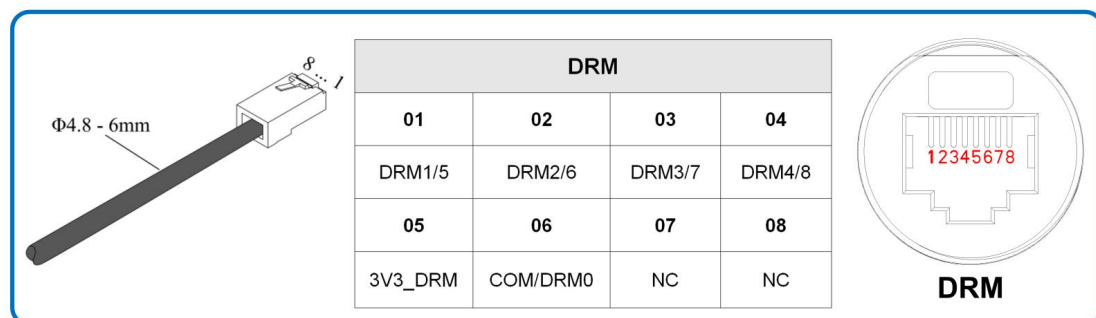
In Australia and New Zealand, the inverter is designed to support demand response modes according to the AS/NZS 4777 standard. Specifically, the inverter must support DRM 0 as specified in Table 1 of the standard.

Additionally, the inverter should also be capable of supporting the other demand response modes listed in Table 1.

Table 1: Demand Response Modes (DRMs)

| Mode | Requirement |
|-------|--|
| DRM 0 | Operate the disconnection device |
| DRM 1 | Do not consume power |
| DRM 2 | Do not consume at more than 50% of rated power |
| DRM 3 | Do not consume at more than 75% of rated power AND Source reactive power if capable |
| DRM 4 | Increase power consumption (Subject to constraints from other active DRMs) |
| DRM 5 | Do not generate power |
| DRM 6 | Do not generate at more than 50% of rated power |
| DRM 7 | Do not generate at more than 75% of rated power AND Sink reactive power if capable |
| DRM 8 | Increase power generation (subject to constraints from other active DRMs) |

Step 1: The network cable for DRM-COM follows the specifications outlined in the provided diagram.



6.9.5 Ripple Control

In Germany, Grid company uses the Ripple Control Receiver to convert the grid dispatching signal into dry contact signal for transmission

The wiring configuration of the ripple control receiver dry contact cables is shown in the figure below:

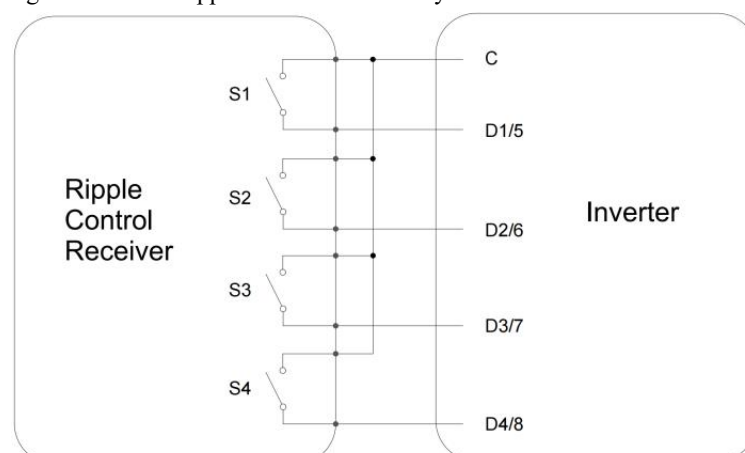


table: Method of Asserting Ripple Control

| S1 | S2 | S3 | S4 | Switch Operation on External RCR | Output power (in% of the Rated AC output power) |
|----|----|----|----|----------------------------------|---|
| 0 | 0 | 0 | 0 | None | 100% (configurable according to need) |
| 1 | 0 | 0 | 0 | Close S1 | 100% |
| 0 | 1 | 0 | 0 | Close S2 | 60% |
| 0 | 0 | 1 | 0 | Close S3 | 30% |
| 1 | 1 | 0 | 0 | Close S1 and S2 | 0% (disconnect from grid) |

7 Commissioning

7.1 Inspection before Commissioning

Before starting the inverter, please ensure the following checklist items are checked:

- Confirm that all equipment has been installed securely and in accordance with the manufacturer's instructions.
- Verify that the DC switch(es) and AC circuit breaker are in the "OFF" position.
- Ensure that the ground cable is properly and securely connected.
- Check that the AC cable is correctly and reliably connected.
- Verify that the DC cable is properly and securely connected.
- Confirm that the communication cable is properly and securely connected.
- Seal any vacant terminals to prevent dust or moisture ingress.
- Ensure that no foreign items, such as tools, are left on top of the machine or inside the junction box (if applicable).
- Verify that the AC circuit breaker is selected according to the requirements specified in the manual and local standards.
- Check that all warning signs and labels on the inverter are intact and legible.

It is essential to complete these checks before starting the inverter to ensure safe and reliable operation.

7.2 Powering on the System

If all the checklist items have been verified and meet the requirements, follow these steps to start up the inverter for the first time:

Step 1: Turn on the AC circuit breaker located between the inverter and the grid.

Step 2 (Optional): If a battery is connected, connect the external DC circuit breaker between the inverter and the battery pack.

Step 3 (Optional): If a battery is connected, manually power on the battery pack.

Step 4: Rotate the DC switch to the "ON" position.

Step 5: If the irradiation and grid conditions meet the requirements, the inverter will start operating normally. Observe the LED indicator on the inverter to ensure it is functioning properly. Refer to the "2.4 LED Panel" section of the manual for an introduction to the LED screen and its indicator definitions.

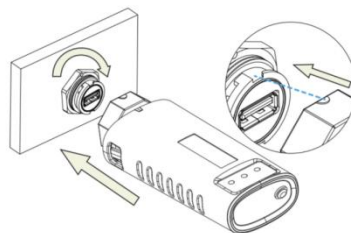
Step 6: If using the SOLARMAN Business system, refer to the quick guide for its indicator definitions.

By following these steps, you can safely start up the inverter and begin its normal operation.

--End

7.3 WiFi Logger Installation

Assemble the logger to the inverter communication interface according to the diagram provided.



7.4 Download App

If you are a residential user, please scan the QR code provided below to download the SOLARMAN Business app. Alternatively, you can visit the website <https://pro.solarmanpv.com/login> to access the app. If you are a residential user, please scan the QR code provided below to download the SOLARMAN Smart app. Alternatively, you can visit the website <https://home.solarmanpv.com> to access the app.



7.5 Registration (SOLARMAN Business)

Go to SOLARMAN Business and sign up.

Click on "Register" and create your account here. Please note that use an email address to register for an account.

International ▼ English Operation Manual

E-mail Phone Username

E-mail

Password

Forgot your password? Local Mode

Log In

Register

←

Register

Enter E-mail

International >

E-mail

Verification Code Send

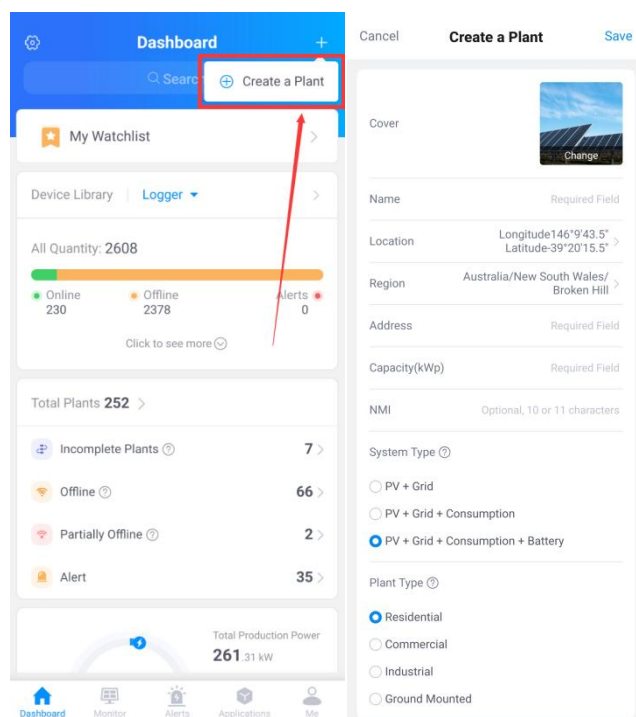
☐ I have read and agreed T&Cs Privacy Policy

Next

7.6 Create a Plant

Click "Create a Plant" at the right corner to create your solar installation.

Please provide the necessary information about your solar plant, including basic details and any additional relevant information. Select the System Type according to the actual installation situation.

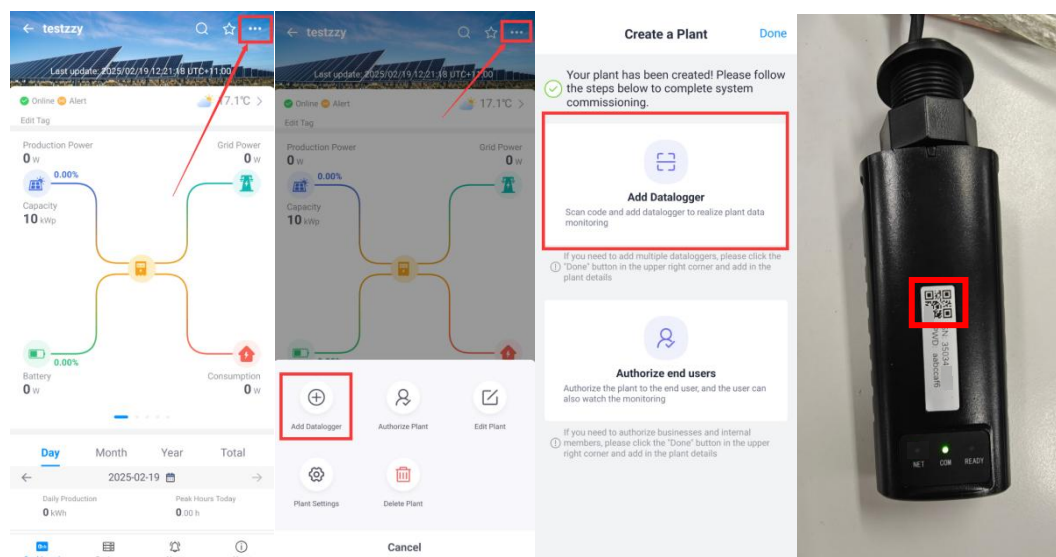


7.7 Add a Logger

step 1 Manually enter the serial number (SN) of the logger.

step 2 Click on the icon located on the right side and scan the QR code on the logger to added.

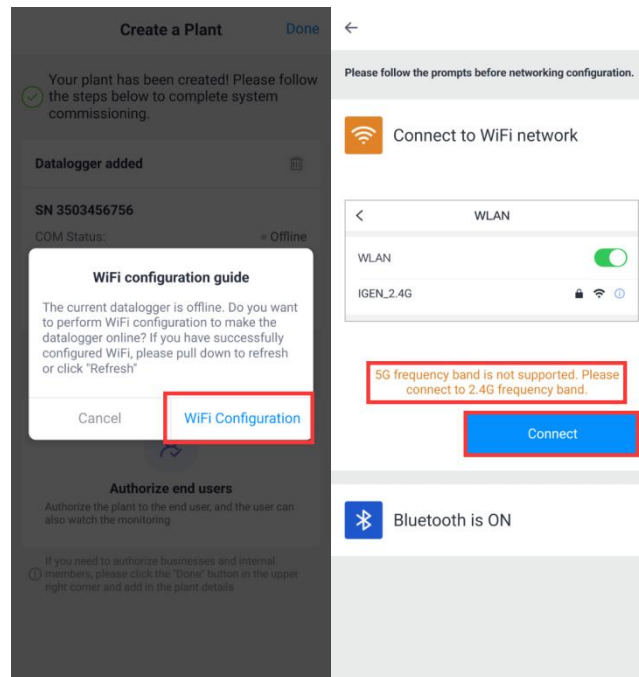
You can locate the logger serial number on the external packaging or on the body of the logger itself.



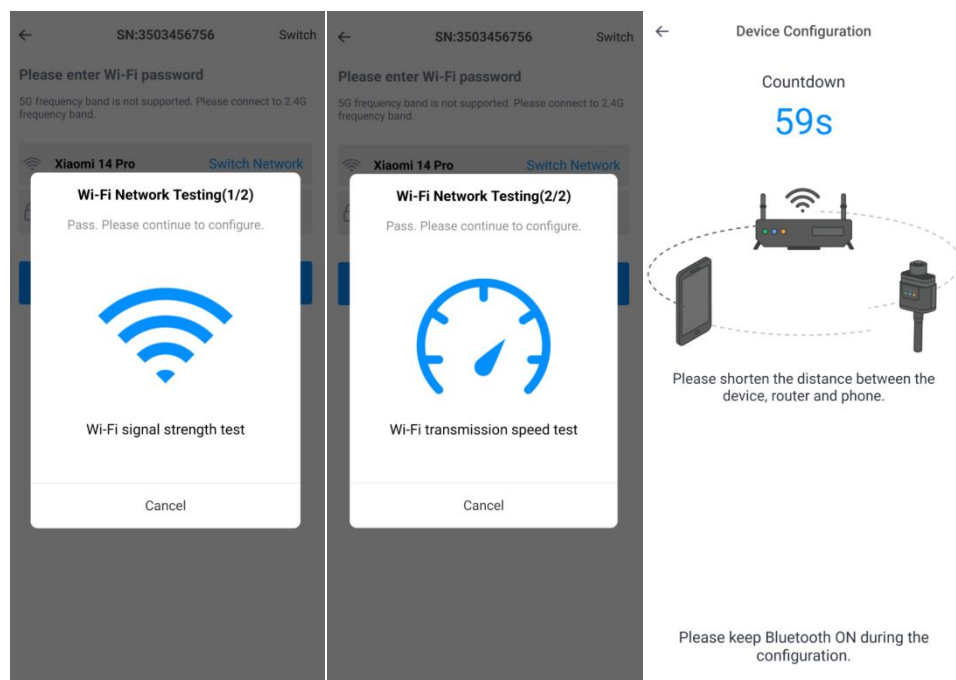
7.8 Network Configuration

Step 1: Click on "WiFi Configure" to access the network settings.

(Ensure that Bluetooth and WiFi are turned ON.)



Step 2: Please wait for a few minutes. Afterward, click on "Done" to complete the setup and view the plant data.



Notice

5G WiFi is not supported.

**Configuration succeeded**

Device data will be displayed in 10 mins. After that, you can check device status in device list.

Done

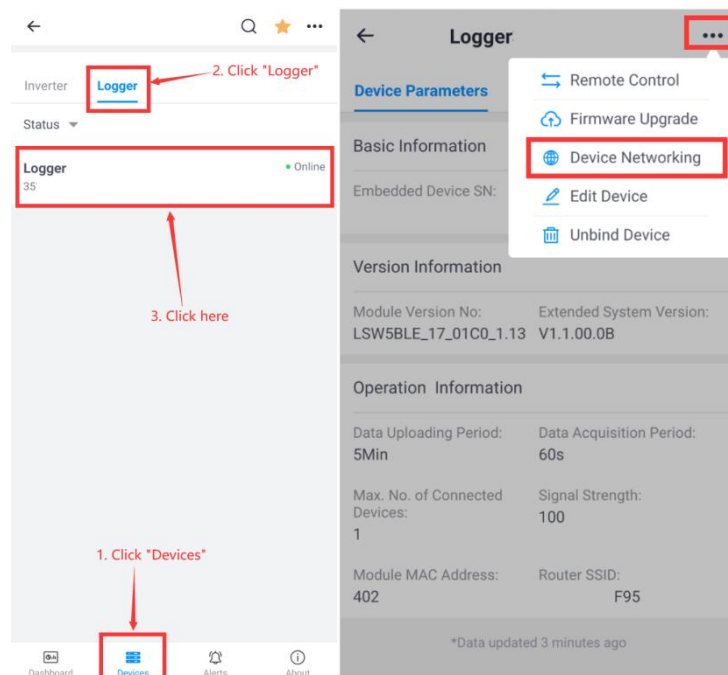


After completing the WiFi connection, The NET and COM indicators will be constantly on, The READY indicator will be flashing.

If the configuration process fails, please check the following reasons and attempt the setup again:

- (1) Ensure that WLAN (Wireless Local Area Network) is turned on.
- (2) Verify that your WiFi connection is functioning properly.
- (3) Confirm that the wireless router does not have any restrictions in place, such as a white-black list.
- (4) Remove any special characters from the Wi-Fi network name (SSID) or password.
- (5) Reduce the distance between your phone and the device during the configuration process.
- (6) Try connecting to a different Wi-Fi network if available.

If need to switch the WiFi network or reconnect to the WiFi, please follow the steps below:



7.9 Authorization

Fill in the information for the residential user, and invite the residential user to download the SOLARMAN Business App from the app store. Residential user can log in using the email address and password that installer have filled in as residential user's account credentials.

If the residential user has already registered for SOLARMAN Smart, please search for the residential user's email address through the "Click here" option below to complete the authorization process.

7.10 Logger Status

| Lights | Implication | Status Description (All lights are single green lights.) |
|--------|-----------------------------|---|
| NET | Communication with router | 1. Light off: Connection to the router failed. 2. On 1s/Off 1s (Slow flash): Connection to the router succeeded. 3. Light keeps on: Connection to the server succeeded. 4. On 100ms/Off 100ms (Fast flash): Distributing network fast. |
| COM | Communication with inverter | 1. Light keeps on: Logger connected to the inverter. 2. Light off: Connection to the inverter failed. 3. On 1s/Off 1s (Slow flash): Communicating with inverter. |
| READY | Logger running status | 1. Light off: Running abnormally. 2. On 1s/Off 1s (Slow flash): Running normally. 3. On 100ms/Off 100ms (Fast flash): Restore factory settings. |

When the router is connected to the network normally, the stick logger should exhibit the following normal operation status:

1. Connection to the server succeeded: The NET light will remain illuminated after the logger is powered on.
2. Logger running normally: The READY light will flash intermittently.
3. Connection to the inverter succeeded: The COM light will remain illuminated..

7.11 Abnormal State Processing

If you encounter abnormal data on the platform while the stick logger is running, please refer to the following table and use the status of the indicator lights to perform basic troubleshooting. If the issue persists or if the indicator lights' status is not listed in the table, please contact Customer Support for assistance.

(Note: Use the table below after the stick logger has been powered on for at least 2 minutes.)

Warning: Before leaving the site, it is crucial to ensure that the stick logger is functioning correctly. If you notice any abnormal behavior or issues, please refrain from leaving the site and immediately contact customer service. You can reach customer service at the following number: 400-181-0512

| NET | COM | READY | Fault Description | Fault Cause | Solution |
|------------|-----|------------|---|--|--|
| Any state | OFF | Slow flash | Communicate with inverter abnormally | 1. Connection between stick logger and inverter loosen. 2. Inverter does not match with stick logger's communication rate | 1. Check the connection between stick logger and inverter. Remove the stick logger and install again. 2. Check inverter's communication rate to see if it matches with stick logger's. 3. Long press Reset button for 5s, reboot stick logger. |
| OFF | ON | Slow flash | Connection between logger and router abnormal | 1. Stick logger does not have a network. 2. Router WiFi signal strength weak. | 1. Check if the wireless network configured. 2. Enhance router WiFi signal Strength. |
| Slow flash | ON | Slow flash | Connection between logger and router | 1. Router networking abnormal. | 1. Check if the router has access to the network. |

| | | | | | |
|------------|-----------|------------|--|---|--|
| | | | normal, connection between logger and remote server abnormal | 2. The server point of logger is modified. 3. Network limitation, server cannot be connected. | 2. Check the router's setting, if the connection is limited. 3. Contact our customer service. |
| OFF | OFF | OFF | Power supply abnormal | 1. Connection between stick logger and inverter loosen or abnormal. 2. Inverter power insufficient. 3. Stick Logger abnormal. | 1. Check the connection, remove the stick logger and install again. 2. Check inverter output power. 3. Contact our customer service. |
| Fast flash | Any state | Any state | Networking status | Normal | 1. Exit automatically after 2mins. 2. Long press Reset button for 5s, reboot stick logger. 3. Long press Reset button for 10s, restore factory settings. |
| Any state | Any state | Fast flash | Restore factory settings | Normal | 1. Exit automatically after 1mins. 2. Long press Reset button for 5s, reboot stick logger. 3. Long press Reset button for 10s, restore factory settings. |



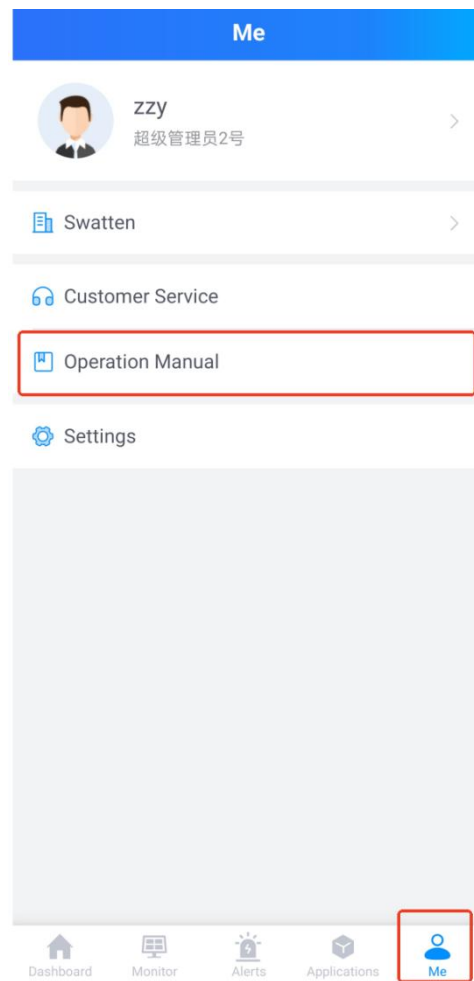
Warning:
Please do not hold the logger body to rotate while install or remove the logger.



Notice:
Do not remove waterproof plug.



For more details, please click "Me" and refer to the Operation Manual for assistance.



8 System Decommissioning

8.1 Disconnecting the Inverter

8.1.1 Disconnecting the Inverter

CAUTION

To ensure safety and prevent the risk of burns, it is important to follow proper procedures when operating or performing maintenance on the inverter. Please adhere to the following steps to disconnect the inverter from the AC and DC power sources:

Step 1: Disconnect the external AC circuit breaker that supplies power to the inverter. Make sure to secure it against accidental reconnection.

Step 2: Rotate the DC switch to the "OFF" position to disconnect all PV string inputs from the inverter.

Step 3: Wait for approximately 10 minutes to allow the capacitors inside the inverter to completely discharge. This step is crucial to ensure that no residual electrical charge remains.

Step 4: Use a current clamp to verify that the DC cable is free from any electrical current. This is an important safety measure to prevent any potential shocks or hazards.

Please remember to wear protective gloves when operating the inverter, even after it has been shut down and allowed to cool down. In addition, always follow safety guidelines and refer to the manufacturer's instructions for specific procedures and precautions related to maintenance and service work on the inverter.

--End

8.1.2 Dismantling the Inverter

CAUTION

Risk of burn injuries and electric shock!

Do not come into contact with any internal live components until at least 10 minutes have elapsed after disconnecting the inverter from the utility grid and PV input.

Before disassembling the inverter, ensure that both AC and DC connections are disconnected.

Step 1: Disconnect all cables from the inverter in reverse order as described in the "Electrical Connection" section.

Step 2: Disassemble the inverter following the reverse steps outlined in the "Mechanical Mounting" section.

Step 3: If needed, remove the wall-mounting bracket from the wall.

Step 4: If the inverter will be stored for future use, please refer to the "Inverter Storage" section for proper conservation guidelines.

--End

8.1.3 Disposal of the Inverter

Users are solely responsible for the proper disposal of the inverter.

WARNING

Please ensure that the inverter is disposed of in accordance with the relevant local regulations and standards to

prevent any property losses or casualties.

NOTICE

Certain components of the inverter may pose a risk of environmental pollution. Please adhere to the disposal regulations for electronic waste that are applicable at your installation site when disposing of these components.

8.2 Decommissioning the Battery

To decommission a Li-ion battery after the inverter has been decommissioned, follow these steps:

Step 1: Disconnect the DC circuit breaker located between the battery and the inverter.

Step 2: Disconnect the communication cable that connects the battery to the inverter.

Step 3: Wait for approximately 1 minute to allow for any residual voltage to dissipate. Then, use a multimeter to measure the voltage at the battery ports.

Step 4: If the battery port voltage is zero, proceed to disconnect the power cables from the battery module.

Note: It is important to exercise caution and follow proper safety procedures when handling and decommissioning batteries.

--End

Sieyuan does not assume liability for the disposal of the battery. The responsibility for proper battery disposal rests with the user. Please ensure that the battery is disposed of in accordance with applicable local regulations and standards to avoid any property damage or harm.

9 Troubleshooting and Maintenance

9.1 Troubleshooting

Note:

Please consult the charger user manual for information regarding the fault codes of the charger. The manual will provide detailed explanations of the fault codes and their corresponding troubleshooting steps.

When an alarm is triggered, you can view the alarm information through the dedicated App. Here are the Alarm ID codes and their respective corrective measures:

| Alarm ID | Alarm Name | Corrective Measure |
|----------|---------------------|--|
| 112 | Grid Overvoltage | 1. Measure the actual grid voltage. If the grid voltage is higher than the set value, please contact the local power company for a solution. |
| 100 | | 2. Check the protection parameters through the SOLARMAN Smart App. |
| 101 | | With approval from the local power operator, modify the voltage protection value. |
| 102 | Grid Undervoltage | 3. Verify the secure connection of the Grid port wiring. 4. If the fault still persists, please contact Sieyuan." |
| 106 | Grid Overfrequency | 1. Measure the actual grid frequency. If the grid frequency is higher than the set value, please contact the local power company for a solution. 2. Check the protection parameters through the SOLARMAN Smart App. With approval from the local power operator, modify the frequency protection value. |
| 107 | Grid Underfrequency | 3. Verify the secure connection of the Grid port wiring. 4. If the fault still persists, please contact Sieyuan. |
| 1 | System Fault | 1. Wait for the inverter to recover normal operation. 2. Disconnect the AC and DC switches, and if there is a battery, disconnect the battery-side switch. After 10 minutes, turn off the AC and DC switches in rotation and restart the system. 3. If the fault still persists, please contact Sieyuan. |
| 108 | | |
| 109 | | |
| 111 | | |
| 116 | | |
| 123 | | |
| 200 | | |
| 201 | | |
| 205 | | |
| 206 | | |
| 216 | | |
| 218 | | |
| 227 | | |
| 300 | | |
| 301 | | |
| 305 | | |
| 312 | | |

| | | |
|-----|---------------------------------------|--|
| 316 | | |
| 320 | | |
| 400 | | |
| 401 | | |
| 403 | | |
| 404 | | |
| 479 | | |
| 481 | | 1. Wait for the inverter to recover normal operation. |
| 502 | | 2. Disconnect the AC and DC switches, and if there is a battery, disconnect the battery-side switch. After 10 minutes, turn off the AC and DC switches in sequence and restart the system. |
| 505 | | |
| 507 | System Fault | 3. If the fault still persists, please contact Sieyuan. |
| 512 | | |
| 700 | | |
| 701 | | |
| 702 | | |
| 703 | | |
| 818 | | |
| 819 | | |
| 820 | | |
| 821 | | |
| 822 | | |
| 825 | | |
| 829 | | |
| 110 | Leakage Current Fault | <p>1. This alarm may be caused by insufficient sunlight or a humid environment. Once the environment improves, the inverter will reconnect to the grid.</p> <p>2. If the environment is normal, check if the AC and DC cables are well-insulated.</p> <p>3. If the alarm continues to exist, please contact Sieyuan.</p> |
| 122 | Ground Fault | <p>1. Check if the AC cable is connected correctly.</p> <p>2. Check the insulation between the grounding cable and live wires.</p> <p>3. If the fault still persists, please contact Sieyuan."</p> |
| 129 | EPS Load Overload | <p>1. Reduce the power of loads connected to the Off-grid port or remove some loads.</p> <p>2. If the alarm continues to exist, please contact Sieyuan.</p> |
| 209 | Photovoltaic Reverse Connection Fault | 1. Check if the corresponding PV string is connected in reverse polarity. If it is, disconnect the DC switch and adjust the polarity when the string current is below 0.5 A. |
| 210 | | 2. If the fault still persists, please contact Sieyuan. *Code 209 corresponds to PV1, and 210 corresponds to PV2 and PV3. |
| 501 | Environmental Overtemperature | <p>Typically, the inverter will resume operation when the internal or module temperature returns to normal. If the fault still persists:</p> <p>Check if the inverter's ambient temperature is too high.</p> <p>Check if the inverter is placed in a well-ventilated area.</p> |

| | | |
|---------------------------------|------------------------------------|---|
| | | <p>Check if the inverter is exposed to direct sunlight. If so, avoid direct sunlight.</p> <p>Check if the fan is operating properly. If not, replace the fan.</p> <p>If the fault still persists, please contact Sieyuan.</p> |
| 503 | Insulation Fault | <p>Wait for the inverter to recover normal operation. If the fault repeatedly occurs:</p> <p>Check if the ISO resistance protection value is set too high and ensure compliance with local regulations, with approval from the local power operator.</p> <p>Check the grounding resistance of the ground and DC cables. Take corrective measures if there is a short circuit or insulation layer damage.</p> <p>If the cables are functioning correctly and the fault occurs during rainy weather, recheck when the weather improves.</p> <p>If there is a battery, check if the battery cables are damaged and if the terminal connections are loose or poor. If so, replace the damaged cables and secure the terminals to ensure reliable connections.</p> <p>If the fault still persists, please contact Sieyuan.</p> |
| 516 528 529 530 531 | Off-grid Abnormality | <p>1. Confirm if the off-grid is overloaded. If it is, reduce the load to below 50%.</p> <p>If the fault still persists,</p> <p>2. If the alarm continues to exist, please contact Sieyuan.</p> |
| 603 611 612 615 616 | Battery Abnormality | <p>1. If the battery voltage is abnormal, check for any abnormalities in the battery power cable connections, such as reverse connection or looseness. If found, please correct the battery power cable connection.</p> <p>2. When the battery power line is correctly connected, check if the real-time battery voltage is abnormal. If so, please contact the battery manufacturer. If not, please contact Sieyuan.</p> <p>3. If the fault still persists, please contact the battery manufacturer.</p> |
| 805 | Parallel Communication Abnormality | <p>1. Check if the communication line for parallel operation is abnormal, including wiring errors or loose connections.</p> <p>2. Check if the parallel operation settings are correct.</p> <p>3. If the fault still persists, please contact Sieyuan.</p> |
| 830 | Meter Communication Abnormality | <p>1. Check if the communication line for the energy meter is abnormal, including wiring errors or loose connections.</p> <p>2. Check if the grid voltage is normal.</p> <p>3. If the fault still persists, please contact Sieyuan.</p> |
| 831 | BMS Communication Abnormality | <p>1. Check if the communication line for the BMS (Battery Management System) is abnormal, including wiring errors or loose connections.</p> <p>2. Check if the battery voltage is normal. If abnormal, please contact the battery manufacturer. If not, continue to check if the BMS has issued any alarms. If there are alarms, please contact the battery manufacturer. If there are no alarms, please contact Sieyuan.</p> <p>3. If the fault still persists, please contact Sieyuan.</p> |

| | | |
|--|--|--|
| | | Please perform the appropriate checks and maintenance procedures based on the specific situation, and if necessary, contact the relevant manufacturers or Sieyuan for further support and solutions. |
|--|--|--|

Note:

If you have implemented the suggested troubleshooting steps and the issue persists, please get in touch with the distributor. In the event that the distributor is unable to resolve the problem, contact Sieyuan directly for further assistance.

9.2 Maintenance

9.2.1 Maintenance Notices

The DC switch can be locked in the OFF position or a position beyond OFF to ensure safety (applicable to "AU" and "NZ" countries).

DANGER

There is a risk of inverter damage or personal injury due to incorrect service.

- Always use special insulation tools when performing high-voltage operations to ensure safety.
- Before starting any service work, disconnect the AC circuit breaker on the grid side and check the inverter status. If the inverter indicator is off, it is recommended to wait until nighttime before disconnecting the DC switch. If the inverter indicator is on, you can directly disconnect the DC switch.
- After the inverter has been powered off for at least 10 minutes, use professional instruments to measure the voltage and current. Only when there is no voltage or current present, and when operators are wearing appropriate protective equipment, should they proceed with operating and maintaining the inverter.
- Even when the inverter is shut down, it may still retain heat and cause burns. Always wear protective gloves when handling the inverter after it has cooled down.

CAUTION

To prevent misuse or accidents caused by unauthorized individuals: Display noticeable caution signs or mark safety warning zones around the inverter to avoid accidents resulting from improper handling.

NOTICE

Restart the inverter only after resolving any faults that compromise its safety performance. Since the inverter does not have serviceable components, never open the enclosure or attempt to replace any internal parts. To mitigate the risk of electric shock, refrain from performing any maintenance tasks beyond those outlined in this manual. If needed, reach out to your distributor for assistance. If the issue persists, contact Sieyuan. Failure to follow these guidelines may result in warranty voidance and associated losses.

NOTICE

Handling the PCB (Printed Circuit Board) or other components sensitive to static electricity can lead to device damage.

- Avoid unnecessary contact with the circuit board.
- Adhere to regulations for protecting against electrostatic discharge and use an anti-static wrist strap.

9.2.2 Inverter Routine Maintenance

| Item | Method | Period |
|------------------------------|---|---|
| System clean | Check the temperature and dust of the inverter. Clean the inverter enclosure if necessary. | Six months to a year (depending on the dust con-Tents in air) |
| Electrical connection | Check whether all cable are firmly connected in place. Check whether there is damage to the cables, especially the surface in contact with metal. - Visual check for any damage or deformation of the inverter. - Check any abnormal noise during the operation. | 6 months after commissioning And then once or twice a year. |
| General status of the system | - Check each operation parameter. Be sure that nothing covers the heat sink of the inverter. | Every 6 months |

9.2.2 Battery Routine Maintenance

WARNING

- If you encounter any issues that could potentially affect the battery or hybrid inverter, please contact the after-sales service for assistance. Unauthorized disassembly is strictly prohibited.
- If you notice exposed copper conductors, please contact the after-sales service for assistance. Do not touch or attempt to disassemble the equipment privately due to the risk of high voltage.
- In the event of any other emergencies, please contact the after-sales service immediately. Follow the provided instructions or wait for the after-sales service personnel to assist you.

| Maintaining Item | Maintaining Period |
|--|---------------------|
| Check the securing of the locking brackets. If they are not properly secured, tighten them as necessary. | Once every 6 months |
| Inspect the outer enclosure for any signs of damage or breakage. If any issues are found, repair the painting or contact the after-sales service for assistance. | Once every 6 months |
| Check for any exposed cables. If any cables are exposed, replace them or contact the after-sales service for help. | Once every 6 months |
| Inspect the battery module for any dust accumulation. Clean the dust if present to prevent it from affecting heat dissipation. | Once every 6 months |
| Check for the presence of any liquid or pests near the battery. Take measures to prevent long-term intrusion. | Once every 6 months |

10 Appendix


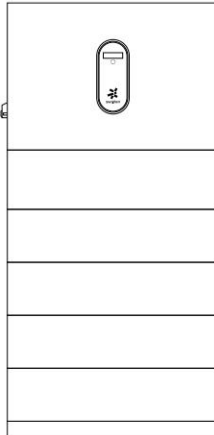

10.1 Technical Data

10.1.1 Inverter

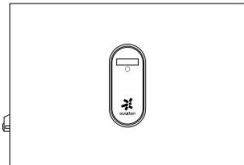
| Type designation | SiH-5kW-SH | SiH-6kW-SH |
|------------------------------------|--------------------------------|------------|
| Input (DC) | | |
| Recommend max.PV input power | 12000 Wp | 13000 Wp |
| Max. PV input voltage | 600V | |
| Min.operating PV voltage | 40V | |
| Start-up input voltage | 50V | |
| Rated PV input voltage | 360V | |
| MPPT Voltage Range | 40-560V | |
| No.of independent MPPT inputs | 2(1/1) | |
| Default No. of PV strings per MPPT | 1 | |
| Max. PV input current | 16A | |
| Max. DC short-circuit current | 20A | |
| Input/Output (AC) | | |
| Max. AC input power from grid | 12000 VA | 13000 VA |
| Rated AC output power | 5000 W | 6000 W |
| Max. AC output apparent power | 5000 VA | 6000 VA |
| Rated AC output current (at 230V) | 21.8 A | 26.1 A |
| Max. AC output current | 22.8 A | 27.3 A |
| Rated AC voltage | 220V/230V/240V | |
| AC voltage range | 154V~276V | |
| Rated grid frequency | 50Hz/60Hz | |
| Grid frequency range | 45~55Hz/55~65Hz | |
| Harmonic (THD) | < 3% | |
| Power factor at rated power | > 0.99 | |
| Adjustable power factor | adj.0.8.leading to 0.8 lagging | |
| Grid Type | Single phase | |
| Efficiency | | |
| Max. efficiency | 97.70% | |
| European efficiency | 97.30% | |
| Protection & Function | | |
| Gird monitoring | Yes | |
| DC reverse polarity protection | Yes | |
| AC short circuit protection | Yes | |
| Leakage current protection | Yes | |
| Surge Protection | DC type II/AC type II | |
| DC swith (PV) | Yes | |

| | | |
|---|--|-----------------|
| DC fuse （battery） | Yes | |
| Protective class | Class I | |
| AFCI | OPT | |
| Overvoltage category | II DC and III AC | |
| Residual current protection | Yes | |
| Insulation monitoring | Yes | |
| Battery input reverse polarity protection | Yes | |
| Battery Data | | |
| Battery Type | Li-ion battery | |
| Battery voltage | 80~460V | |
| Max. charge current | 30 A | |
| Max. discharge current | 30 A | |
| Max. charge power | 6600 W | |
| Max.discharge power | 6600 W | |
| General Data | | |
| Dimensions(W*H*D) | 640*1012*360mm | |
| Weight | ≤132kg (with 3 modules) | |
| Mounting method | Floor-standing | |
| Topology(PV/battery) | Transformerless / Transformerless | |
| Degree of protection | IP65 | |
| Operating ambient temperature range | -25-60 (Derating above 45) | |
| Allowable relative humidity range | 5-95% | |
| Cooling method | Natural convection | |
| Max. operating altitude | 2000m | |
| Display | LED | |
| Communication | 2*RS485/2*CAN/WLAN | |
| DI/DO | 4*DI/2*DO/DRM0 | |
| PV connection type | MC4 (PV, Max. 6 mm²) | |
| Battery connection type | Plug and play connector (Battery, Max. 10 mm²) | |
| AC connection type | OT Terminals (Grid / Backup, Max. 26 mm²) | |
| EPS Data （off-grid mode） | | |
| Rated voltage | 220V/230V/240V(±2%) | |
| Frequency range | 50Hz/60Hz(±0.5%) | |
| Total hamonic factor output voltage | ≤2% | |
| Switch time to emergency mode | ≤10 ms | |
| Rated output power | 5000 W /5000 VA | 6000 W /6000 VA |
| Peak output power | 8400 VA,10s | |

10.1.2 Battery

| Manufacturer | | Shanghai Sieyuan Watten Technology Co., Ltd. | | |
|--|----------------|--|---|--|
| System Model Type | | SieB-H9600-F | SieB-H12K8-F | SieB-H16K0-F |
| Usable Energy (kWh)* ¹ | | 9.60 | 12.80 | 16.00 |
| Depth of Discharge | | Max.100% DOD (settable) | | |
| Module Type | | SieB-H3200-F | | |
| Module Parameter | | 64V 50Ah 640*172*360mm 33.3±0.5kg | | |
| Cell Type | | LPF (LiFePO4) | | |
| Module Configuration | | 3 | 4 | 5 |
| | |  |  |  |
| | | | | |
| | | | | |
| | | | | |
| Cell Configuration | | 1P60S | 1P80S | 1P100S |
| Nominal Voltage (V) | | 192 | 256 | 320 |
| Operating Voltage Range (V) | | 171~216 | 228~288 | 285~360 |
| Max. Continuous Current (A)* ² | | 30 | | |
| Max. Continuous Power (kW)* ² | | 5.76 | 7.68 | 9.60 |
| Communication | | CAN / RS485 | | |
| Weight (Kg) | | 152 | 185 | 218 |
| Dimensions (W*H*D) (mm) | | 640*1012*360 | 640*1172*360 | 640*1332*360 |
| Operating Temperature (°C) | | Charge: 0~50 / Discharge: -20~50 | | |
| Storage Temperature (°C) | | -20~45 (≤1 Months) / -20~25 (≤6 Months) | | |
| Humidity | | 5%~95% | | |
| Altitude (m) | | ≤2000 | | |
| Enclosure Type | | IP65 (Indoor / Outdoor) | | |
| Cooling | | Natural convection | | |
| Installation Location | | Floor-standing | | |
| Display | | SOC indicator, Status indicator | | |
| Standard and Certification | Safety | IEC62619, IEC63056, IEC62040-1, IEC62477-1, CEC | | |
| | EMC | IEC61000-6-1/3 | | |
| | Transportation | UN38.3 | | |
| | Others | CE, RoHS | | |
| Warranty | | 10 Years | | |
| 1. Test conditions: 3.0V~3.5V, 0.2C Charge (CC-CV) and Discharge at 25±3°C, 100% depth of discharge (DOD); | | | | |

2. Max. Continuous Current / Power derating will occur related to temperature / SOC / Humidity;

| Manufacturer | | Shanghai Sieyuan Watten Technology Co., Ltd. |
|---|--------|--|
| System Model Type | | SieB-H19K2-F |
| Usable Energy (kWh)* ¹ | | 19.20 |
| Depth of Discharge | | Max.100% DOD (settable) |
| Module Type | | SieB-H3200-F |
| Module Parameter | | 64V 50Ah 615*360*165mm 35kg |
| Cell Type | | LPF (LiFePO4) |
| Module Configuration | | 6 |
| | |  |
| | | |
| | | |
| | | |
| | | |
| | | |
| | | |
| Cell Configuration | | 1P120S |
| Nominal Voltage (V) | | 384 |
| Operating Voltage Range (V) | | 342~432 |
| Max. Continuous Current (A)* ² | | 30 |
| Max. Continuous Power (kW)* ² | | 11.52 |
| Communication | | CAN / RS485 |
| Weight (Kg) | | 251 |
| Dimensions (W*H*D) (mm) | | 640*1492*360 |
| Operating Temperature (°C) | | Charge: 0~50 / Discharge: -20~50 |
| Storage Temperature (°C) | | -20~45 (≤1 Months) / -20~25 (≤6 Months) |
| Humidity | | 5%~95% |
| Altitude (m) | | ≤2000 |
| Enclosure Type | | IP65 (Indoor / Outdoor) |
| Cooling | | Natural convection |
| Installation Location | | Floor-standing |
| Display | | SOC indicator, Status indicator |
| Standard and Certification | Safety | IEC62619, IEC63056, IEC62040-1, IEC62477-1, CEC |
| | EMC | IEC61000-6-1/3 |

| | | |
|--|----------------|----------|
| | Transportation | UN38.3 |
| | Others | CE, RoHS |
| Warranty | | 10 Years |
| 1. Test conditions: 3.0V~3.5V, 0.2C Charge (CC-CV) and Discharge at 25±3°C, 100% depth of discharge (DOD); | | |
| 2. Max. Continuous Current / Power derating will occur related to temperature / SOC / Humidity; | | |

Shanghai Sieyuan Watten Technology Co., Ltd.

Address: No. 3399 Huaning Rd.
Minhang District,
Shanghai 201100
Q. R. China

Website: <https://www.swatten.com>