

Quick Start Guide

WWW.SWATTEN.COM

Product Introduction



Installation Video



User Manual

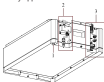


WWW.SWATTEN.COM



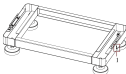
No.	Parts
1	PCU
2, 3, 4	Battery modules
5	Base

Battery appearance



No.	Parts
1	Ventilation valve
2	Power Connector
3	Communication Connector

Basic appearance

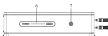


No.	Parts
1	Leveling point

Front control appearance



Right View



Front View



Left View



Bottom View

1 Communication terminal (COM)	2 Testing terminal	3 DC terminal (BAUT)
4 Leveling point	5 Air switch	6 30°C indicator
7 Multifunction button indicator	8 Ventilation valve	

Product Introduction

Check the following items before receiving the product.

1. Checking the Outer Packing

Inspect the outer packing for any signs of damage, such as holes or cracks.

Additionally, verify the battery model to ensure it corresponds to your request.

If you notice any damage or if the battery model is incorrect, refrain from unpacking the product, and promptly contact your dealer for further assistance.

2. Checking Deliverables

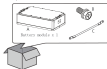
Upon unpacking the battery, carefully inspect the deliverables to ensure they are undamaged, complete, and free from any noticeable defects. If you find any missing or damaged items, promptly contact your dealer for resolution. Please refer to the Packing List within the packing case for specific information regarding the number of deliverables that should have been included with the battery.

Power Control Unit



Item	Name	Quantity
A	PCU Unit	1
B	Fan	1
C	Fan Filter	1
D	Fan Filter Cover	1
E	Installation bracket	1
F	Connecting cable (for bottom use)	1
G	Support leg	1
H	Connecting terminal	1
I	Check installation manual	1
J	Power cable with MC4 connectors	1
K	Communication port plug	1
L	BMS connector 2	1

Battery module



Item	Name	Quantity
A	Battery module	1
B	Connecting screw	1
C	Connecting cable	1

Installation

Installation Environment Requirements:

1. Do not install the equipment near flammable, explosive, or corrosive materials.
2. Avoid installing the equipment in accessible areas, especially within reach of children. The equipment generates high temperatures during operation, so touching the surface should be avoided to prevent burns.
3. Take care to avoid drilling holes near water pipes and buried cables in walls.
4. Install the equipment in a sheltered location to protect it from direct sunlight, rain, and snow. If necessary, construct a sunshade.
5. Ensure that the equipment is installed in a well-ventilated area to facilitate proper dissipation of heat. The installation space should be spacious enough for ease of operation.
6. The equipment's ingress protection rating determines whether it can be installed indoors or outdoors. Additionally, ensure that the temperature and humidity at the installation site are within the specified range.
7. Install the equipment at a suitable height for convenient operation, maintenance, electrical connections, and easy access to indicators and labels.
8. The installation altitude should not exceed 2000m above sea level.
9. Keep the equipment away from electromagnetic interference. If there are any radio or wireless communication devices operating below 30MHz near the equipment, ensure that the equipment is at least 30m away from those devices.

Mounting Support Requirements:

1. Ensure that the mounting support is made of nonflammable and fireproof materials.
2. The surface where the equipment is mounted should be sturdy enough to support the weight of the product.
3. Position the battery system near a wall and securely install the locking brackets to prevent the battery from accidentally falling.

Installation Angle Requirements:

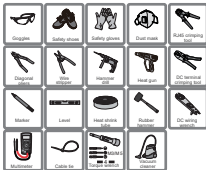
1. The equipment must be installed vertically, without any tilt or upside down.





Installation Tool Requirements

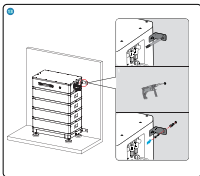
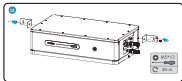
The following tools are recommended when installing the equipment. Use other auxiliary tools on site if necessary.



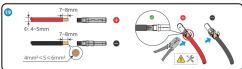
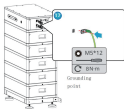
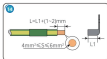
Installation



Installation



Installation



Installation

